



AGENDA

Institute of Adult Learning (IAL)

BACKGROUND: iN.LEARN2.0

Application Process

Clinic (IAL, Adventure Room, Level 5) – (same plc after InnovBite)

IAL's Areas of Focus



Capability Development

- Nurture a vibrant and dynamic CET community
- Offer credentials and qualifications to recognise the professionalism of CET professionals

Workplace Learning

Partner enterprises to foster workplace learning capabilities

Research

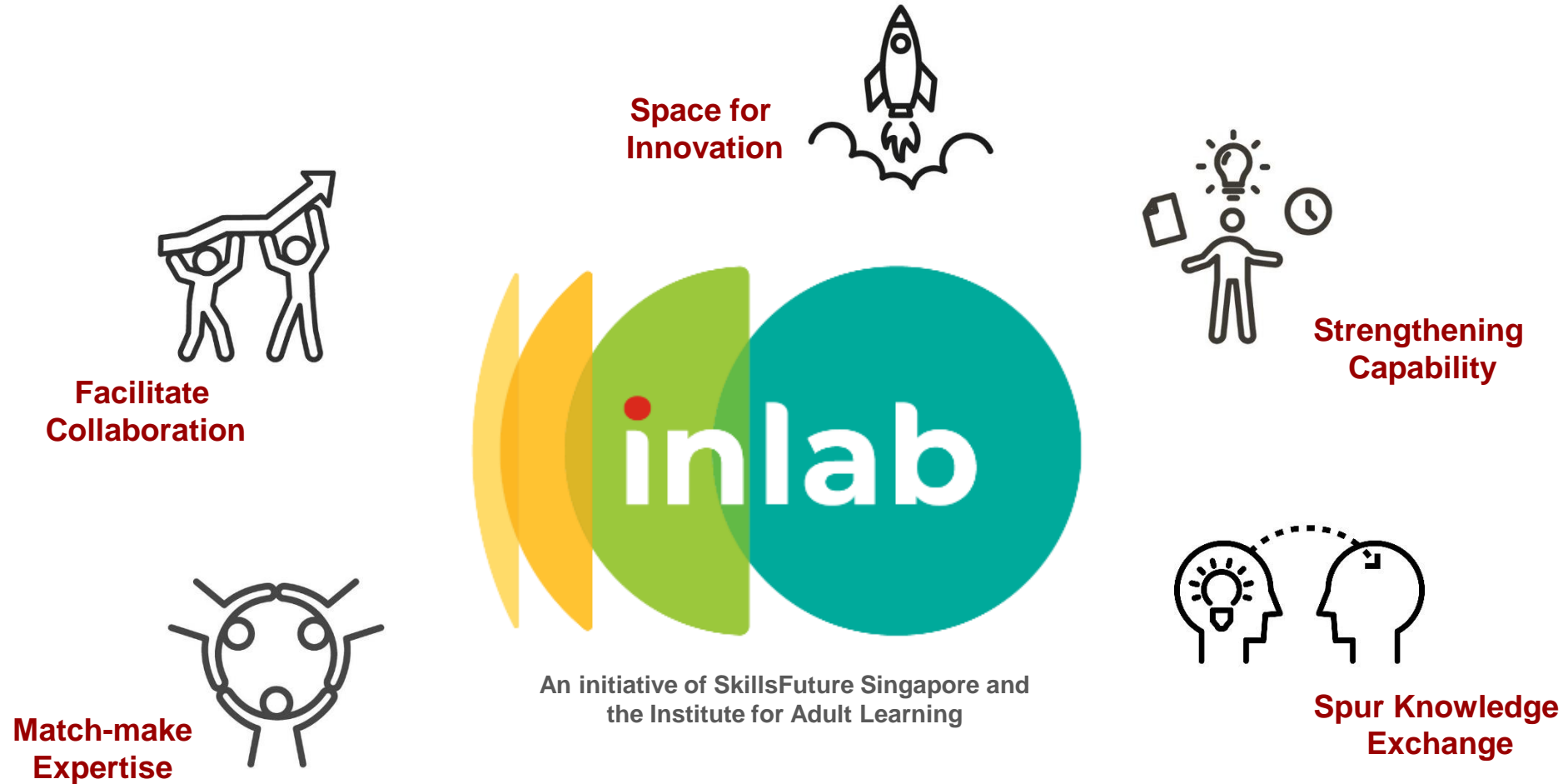
Lead and conduct research to inform policy and practice

Learning Innovation

Lead innovation and experimentation in pedagogical learning design and practice

Innovation Centre for the CET Sector

Bringing together the CET community to explore, collaborate and innovate learning solutions.



* CET – Continuing Education and Training





Building a Vibrant Learning Innovation Ecosystem

Engaging interested stakeholders who can value-add to driving innovation in CET learning.

Partnering with Purpose

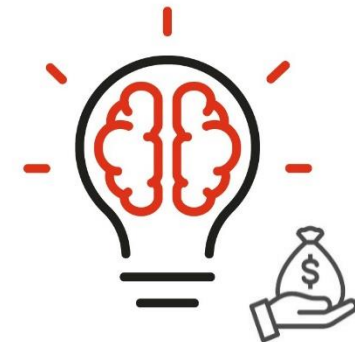
- **Get involved in or contribute to our programs and initiatives**
- **Create value for CET learning, and stay on the cutting-edge, by participating in or adopting our learning solutions trials, prototypes and sandboxes**
- **Develop proprietary, next-generation innovations incorporating latest technology and practice**



**Training Providers
and Professionals
(TAE Community)**



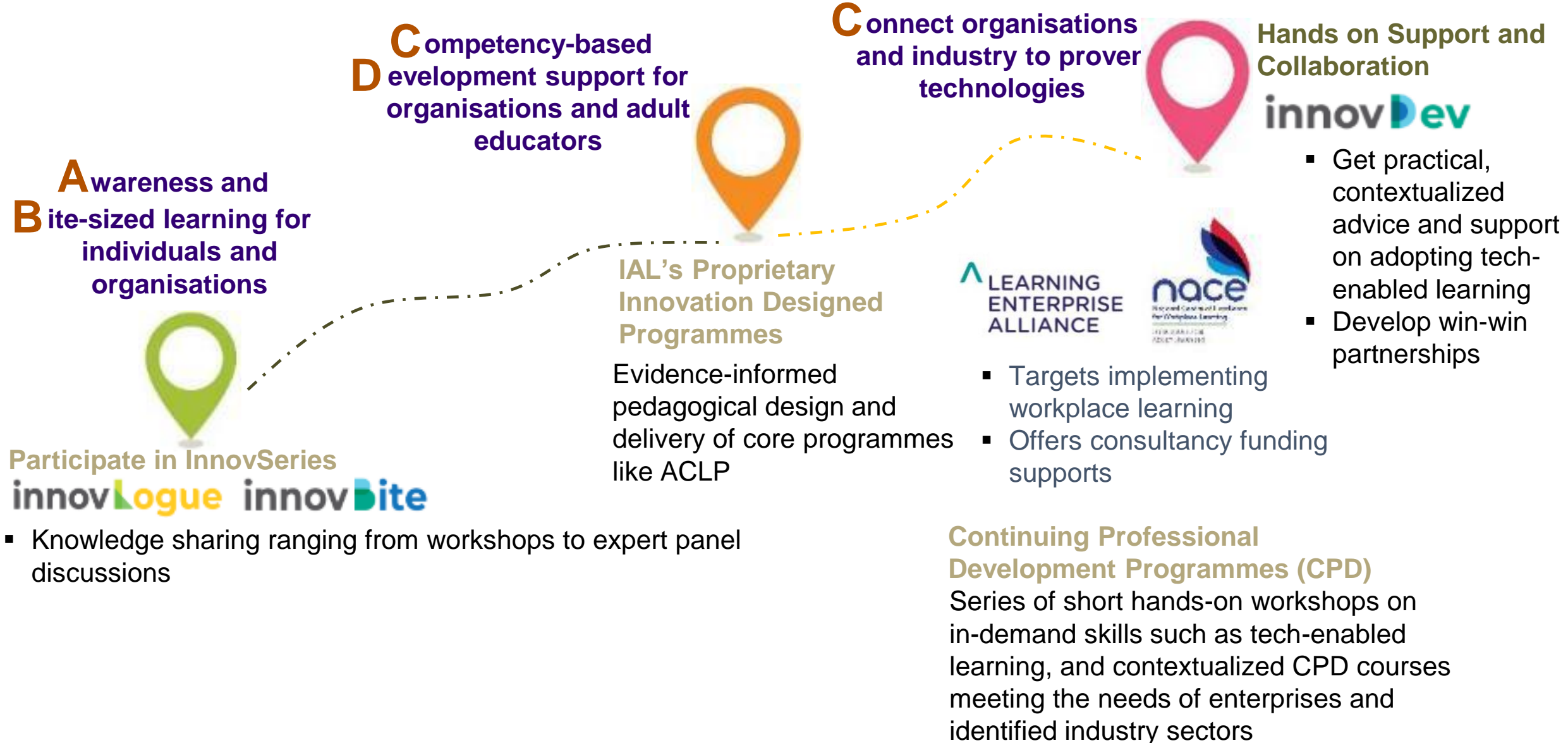
**Enterprises and
Industry Associations**



Solutionist Organisations



TAE Learning Innovation Journey starts at the inlab...



Continuing the Innovation Learning Journey ...



Research Informed:
Translate and Apply

- Stemming from various IAL research studies including 'Developing Innovative Learning Culture in SMEs', 'Understanding Adult Learners' Sense-making to Inform Pedagogical Innovations in Blended Learning' and 'Assessment for the Changing Nature of Work'
- Measuring the pulse of adult learning in the moment through the Covid-19 Learner and Adult Educator Studies



Prince's Landscape



June 2018

The Logistics Institute Asia Pacific & Changi General Hospital



November 2019



Lithan Academy & ITE College East



November 2019



Download the above videos from Dropbox by scanning this QR.

Or go to <https://bit.ly/innovplususecase>



Acknowledged by our Partner in their innovation efforts

7/29/2021

Nurses who are also innovators, Health News & Top Stories - The Straits Times

THE STRAITS TIMES

BRANDED CONTENT

Nurses who are also innovators

Doing more than just caring for patients, these nurses have also put on their thinking cap to improve work processes which have helped to increase efficiency and cut down on manpower and costs

Devising a serious game to measure physical dexterity is particularly challenging, but in just six months, they developed a prototype that is being piloted on new nurses, and could be deployed more widely by September 2021.

By conversing with a virtual patient, nurses are able to practise healthcare communication and explain procedures and provide reassurance to the patient.

They will then don a glove with a sensor woven into it while performing IV cannulation on a 3D printed arm. This arm is connected to a laptop. The glove can sense the pressure when a cannula is inserted, and the virtual patient will react and

Triage is a process for ED nurses to prioritise patients according to how urgent and serious their illnesses are. Doing triage competently and accurately, including asking the right questions, ensures that patients in need of urgent attention are seen by doctors quickly and that resources are used efficiently.

Under the guidance of ED doctors and with the support of her peers, Stacey worked with a vendor to build the app. The app includes videos that simulate the conditions of patients in real life. The user then needs to ask the relevant questions that can be used to assess the condition of the patients. The app uses artificial intelligence to simulate patient responses and users will receive real-time feedback on how they fared. The project was awarded the InnovPlus Challenge Award, organised by the Institute of Adult Learning Singapore, which provided a grant to develop the app.

THE STRAITS TIMES (Straits Times) 7/29/2021
Nurses who are also innovators

By conversing with a virtual patient, nurses are able to practise healthcare communication and explain procedures and provide reassurance to the patient.

”



By conversing with a virtual patient, nurses are able to practise healthcare communication and explain procedures and provide reassurance to the patient.

We want to leverage this as a form of continuous staff education in times of a pandemic and beyond. We see this as a platform to engage our nurses and enhance their learning.

VICE CHIEF
Nurse clinician, Changi General Hospital (2018)

”

Dr Victoria Dela Cruz Gonzales
Nurse clinician, Sengkang General Hospital (SGH)

used by the company for promotional purposes and is not to be relied on by any 3rd party without IC's prior written consent.

International Recognition of IAL's Expertise in Online Learning



Nov 2020

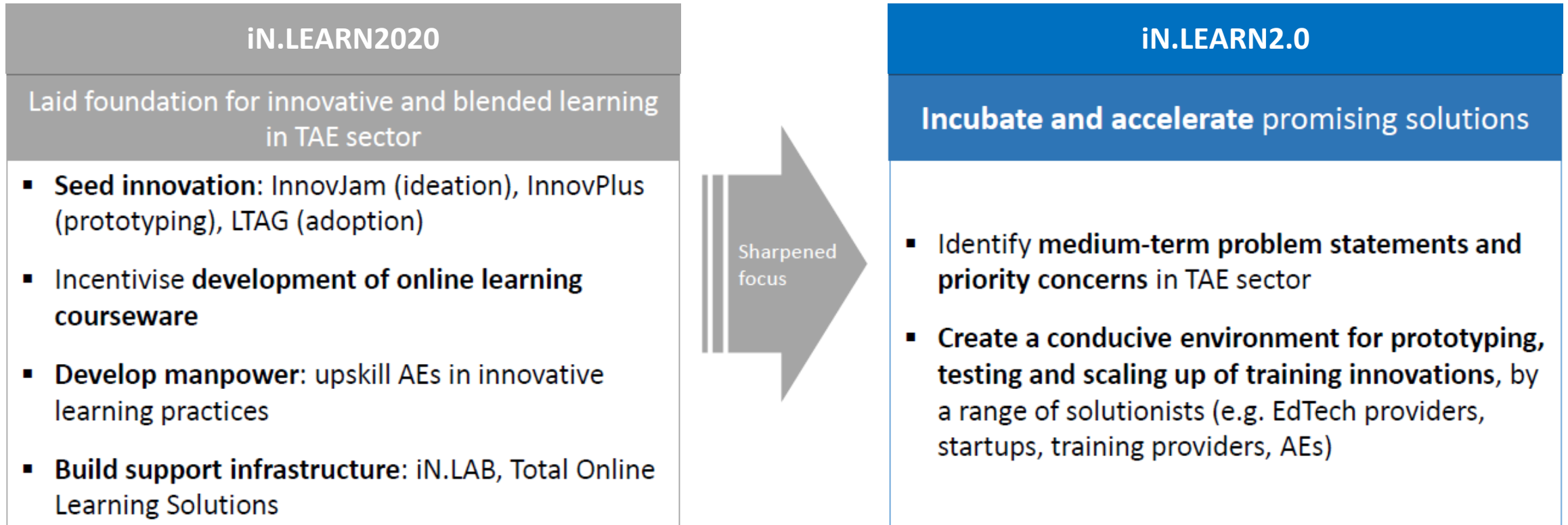
- IAL delivered 2 online courses for 39 trainers from **Asian Productivity Organisation (APO)** based in Tokyo, Japan in November 2020
 - “Using the Zoom Platform to Deliver Virtual Training”
 - “Up Your Facilitation Skills to Deliver Impactful Virtual Learning”
- Average feedback score of **>4 out of 5**

Aug 2021

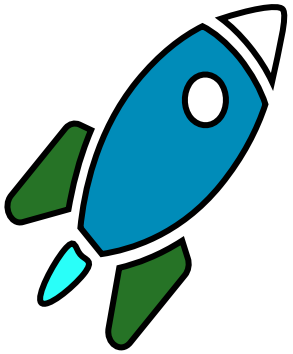
- In progress – APO engaging IAL to evaluate their digital learning programmes

BACKGROUND

Building on past achievements, iN.LEARN2.0 is taking on a more targeted approach to (1) Co-fund and co-share the risks of promising innovations and grant **regulatory** waivers to remove barriers that hinder the testing of new learning innovations and (2) Create a conducive environment for prototyping, testing and scaling up of learning innovations.



IN.LEARN2.0



- Building and extending on iN.LEARN 2020, iN.LEARN2.0 focuses on **scaling** up adoption of innovative learning solutions comprising:

First, Incubate prototypes for **industry-wide** application;

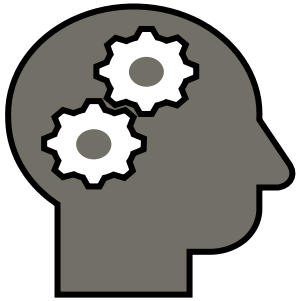
Second, Accelerate promising prototypes towards **commercialisation**; and

Third, SSG Innovation Sandbox which provides innovators a conducive space for the experimentation and implementation of innovative CET solutions by granting time-limited regulatory waivers so that courses delivered using these innovative solutions can be eligible for SSG course fee funding and/or SkillsFuture Credit.

- Four focal areas:

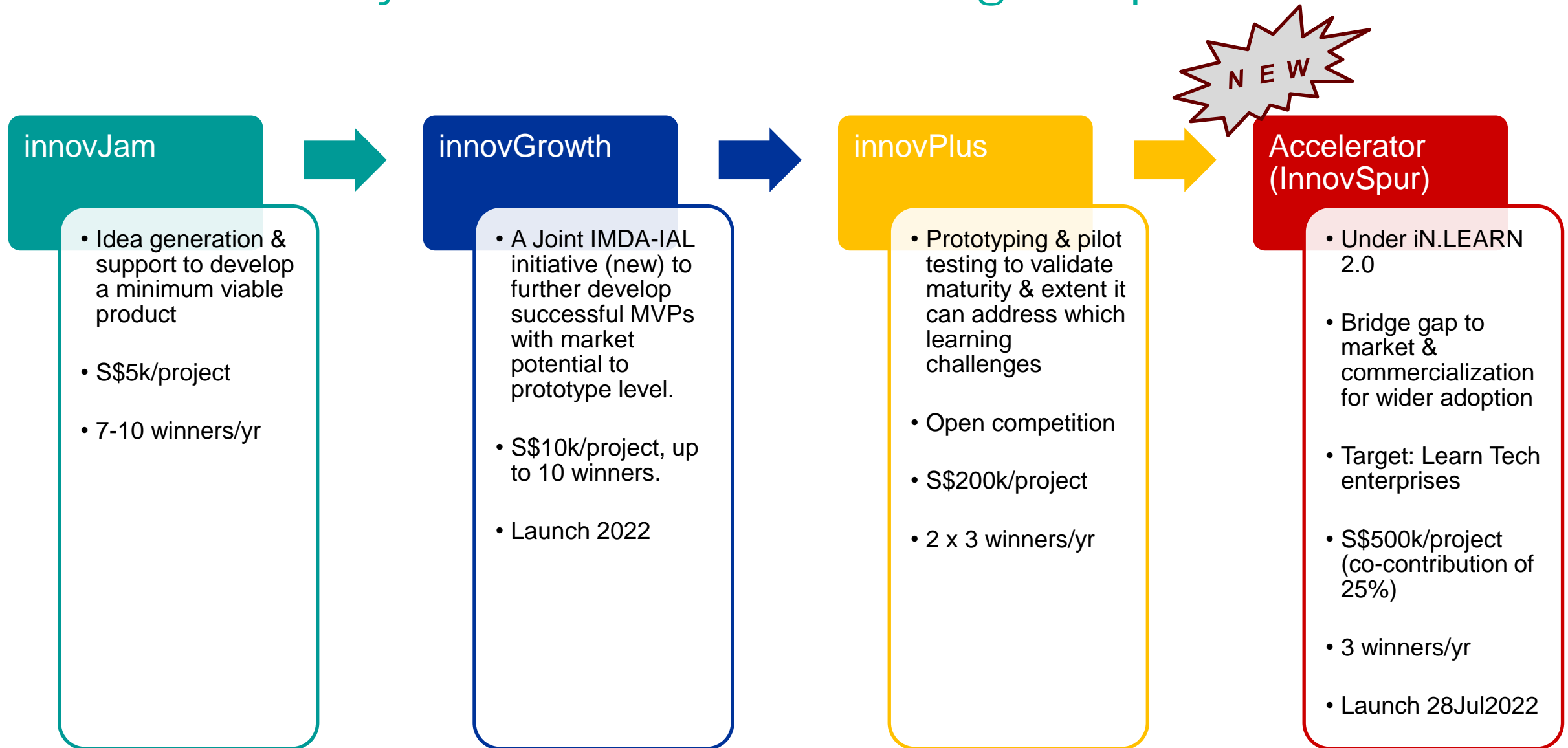
The proposed solutions and/or Innovation Sandbox should fulfil at least one of four **focus** areas:

- 1) Increasing the uptake of online and blended learning by individuals;
- 2) Amplifying enterprises' adoption of innovative learning technology; and
- 3) Developing effective remote assessment and proctoring solutions for individual and enterprise-led training; and
- 4) Developing effective placement solutions that tighten the industry-training nexus



	Incubator (innovPlus)	Accelerator (innovSpur)	Innovation Sandbox ^{^SSG}
Description	Develops promising ideas into minimum viable products (MVPs)	Develops successful Incubator MVPs into minimum marketable products (MMPs)	Helps innovators surmount regulatory obstacles to access course fee funding or SkillsFuture Credit
Quantum	Up to \$200,000 per project, for a year	Up to \$500,000 per project, for up to two years (per IAL's recommendation, we would be limiting this to a year as it should not take more than 12 months to further develop a prototype to MMP)	Capped at \$800,000 course fee grant (CFG) per project, for up to two years
Projects per year (Target outcome)	EOI (26Aug22)	3	

Overview of key IC's initiatives to encourage adoption





This call is open to all Singapore registered companies fulfilling the following criteria

- a) Registered and operating in Singapore;
- b) Local and foreign entities (with local UEN)

The initiative is open to an inclusive group of innovators, and is targeted at training providers, Education Technology solutionists, enterprises, and Training and Adult Education professionals.



The proposed solutions should fulfil at least one of three **focus** areas:

- 1) Increase the uptake of online and blended learning by individuals;
- 2) Amplifying enterprises' adoption of innovative learning technology; and
- 3) developing effective remote assessment and proctoring solutions for individual and enterprise-led training.
- 4) Develop effective placement solutions, enterprises, & Training and Adult Education nexus.



	Details
Project Duration	Typically 12 months
Support Quantum	Up to S\$500,000 of project qualifying cost
Qualifying Cost Items	<ul style="list-style-type: none">• 25% co-contribution of eligible cost• Basic Manpower Costs• Equipment / Softwares• Material & Consumables• Professional Services

- **Evaluation Panel:** Two stages (Shortlist & Winning). Final Winning Stage:
 - (1) SSG
 - (2) IAL
 - (3) Proposal/ Industry Reviewers (International / Esteemed)

Pre & Stage 1: Shortlisting Evaluation Criteria

Shortlisting Criteria

- | | |
|----|---|
| 1 | Completeness of Proposals |
| 2 | Compliance with conditions e.g. alignment to focus area, extent of achieving intended learning outcomes |
| 3 | Completeness and Soundness
Quality of Proposal (Product-Market-Technology + Commercialisation Plan) to achieve Technology Readiness Level ≥ 7 (min), 02 (min) x Enterprise Adoption from Different Sectors |
| 3a | Business (Market and Competition) |
| 3b | Business (Receivers) |
| 3c | Technology (Technical application / intellectual properties) |
| 3d | Project & Plan (Resources) |
| 3e | Risk, Challenges and Mitigations |
-

Important Considerations

1. Extent of innovativeness and ecosystem disruption (i.e. are similar solutions available in the market)
 - 2 Scalability within and beyond Singapore (outcomes beyond 02 adopters/learners0
 - 3 Suitable risk mitigation strategy, including a realistic implementation plan and schedule
 - 4 Track record and required skills/competencies of project team
- | | |
|--|--|
| | |
|--|--|

Stage 2: Award Evaluation Criteria

(A)
Contribution to
Grant
Objectives
(30 pts)

- **Alignment to one or more of the four Focus Areas**
- **Contribute to INLEARN2.0's goal of driving learning innovation**
- **Potential to increase adoption for individual / enterprises I TAE**
- **Fit 4 Purpose**

(B) Strength of
Scientific
Excellence &
Innovation
Potential
(20 pts)

- **Extent Project Objectives can be met**
- **Framework, Design, Methodology appropriate and sound**
- **Sufficiency of data / scientific justification / market research**
- **Extent of innovativeness and Technology Readiness Level (TRL) (entry & exit)**
- **Learning solutions / outcomes and concepts: extent it is original & innovative**
- **Address a capability gap, major trend/ driver of change to impact TAE**
- **Pedagogical underpinnings (Integration of research knowledge and use of learning theories into the proposed innovation)**



Stage 2: Award Evaluation Criteria

(C) Application
& Deployment
in Singapore &
Commercialisation (30 pts)

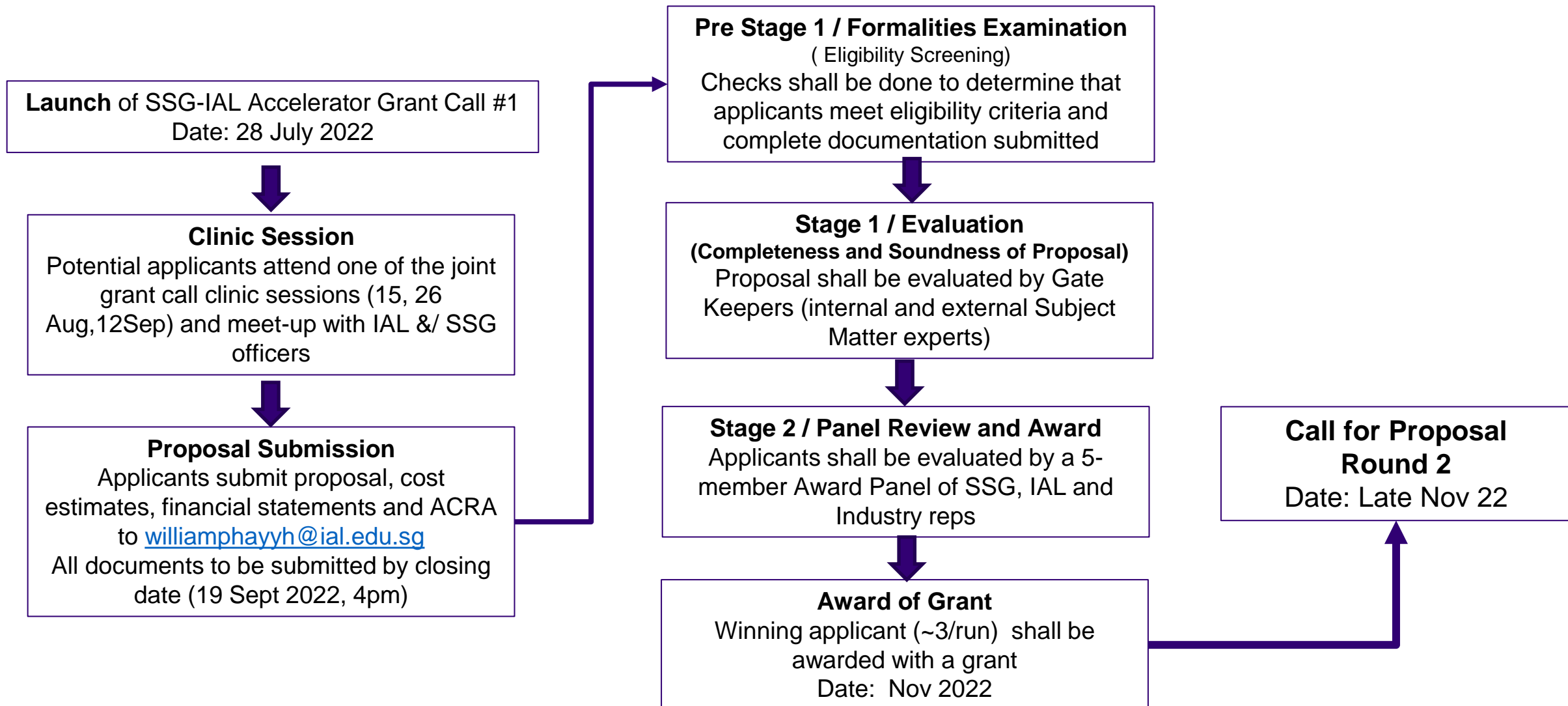
- **Potential to develop a product, process or service that leads to commercialisation**
- **Diversity in the participating pilot (adopter) organisation**
- **Ecosystem disruption / Plan to translate to the identified industry(ies), industry engagement**
- **Expected impact on individuals, training providers & enterprises**
- **Suitable risk mitigation strategy, realistic implementation (& a post-implementation) plan & schedule**
- **Scalability within & beyond Singapore**

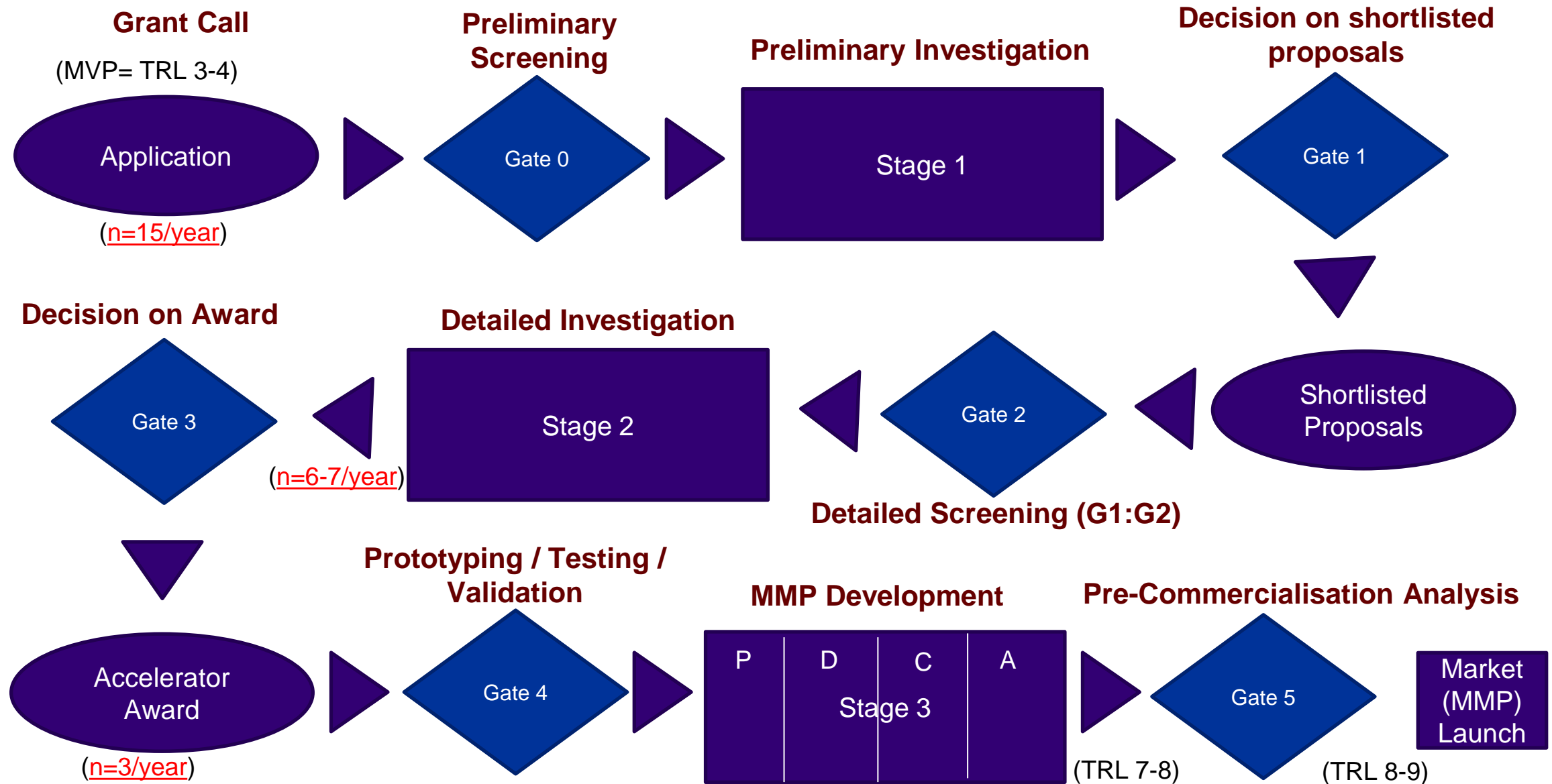
(D) Execution
Strength &
Technical
Competency (20 pts)

- **Members with relevant expertise and experience**
- **Proposal integrate relevant public /pvt sector, tech providers & adopters fm SG or international to strengthen market appeal and enhance competitiveness**
- **Project milestones and resources**



Submission / Evaluation Process





Next Steps : Application Process

- To read the Info kits and follow the application guidelines in the checklist page eg

- Documents:

- Grant Call Info Sheet
- Application Form
- Accelerator project proposal
- Annex A – Schedule
- Annex B – Budget
- Annex C – CV
- Annex D – letter of intents (02 enterprise adaptors)
- Application checklist
- Declaration and Consent

- Application Evaluation Matrix, Financial Assessment,

- Regulatory Sandbox

Contact Person: williamphayyh@ial.edu.sg

ACCELERATOR APPLICATION FORM

SKILLSfuture sg IAL INSTITUTE FOR ADULT LEARNING SINGAPORE

IN LEARN 2025 ACCELERATOR (SSG-IAL) PROGRAMME
1ST GRANT CALL

(FOCUS AREA 1: INCREASE INDIVIDUALS' TAKE-UP LI
(FOCUS AREA 2: INCREASE ENTERPRISE'S ADOPTION OF INNOVATIVE
(FOCUS AREA 3: DEVELOP ROBUST REMOTE ASSESSMENT SOLUTIONS
ENTERPRISE-LED TRAINING)

All information is treated in confidence. The information is furnished to the IAL with the understanding that it is for evaluation, reference, and reporting purposes. Please complete ALL sections, carefully. Incomplete submissions will not be accepted.

1. PROJECT DETAILS & DESCRIPTION:

Proposal ID: Focus Area:

Proposal Title:

Budget Requested : \$ Period of Support: years Main UEN:

List of Project Team Members (Please add/delete rows where necessary)

Role	Name	Designation	Department & Institution	Contact (Email)
Lead PI ¹				
Co-PI ² (1)				
Co-PI (2)				
Co-PI (3)				
Collaborator ³ (1)				

¹ Main application refers to the organisation Singapore-based company registration no (UEN), to which the Lead PI belongs, which will provide the primary support for the proposed project. This organisation will be named in the Letter of Award as the Host Organisation.

ACCELERATOR APPLICATION FORM

Collaborator (2)

to which the Lead PI belongs, which will provide the primary support for the proposed project. This organisation will be named in the Letter of Award as the Host Organisation. **Statutory Boards are not eligible to participate in this Accelerator**

² Lead PI refers to the Lead Principal Investigator who is Award as the Lead Principal Investigator for the project.

³ Co-PI refers to the Co-Principal Investigator who is the p as a Co-Principal Investigator for the project.

⁴ Collaborator refers to any company, institution, incorporated collaborator, which is not the employer institution of the Lead Investigator but is to be engaged in the project in collaboration is likely an Enterprise that adopts learning technology. Must be a n receive any part of the funding for the project.

Technology Readiness Levels (TRL)

TRL	Description	Examples
TRL 1	Basic principles observed and reported	Lowest level of technological research begins to be reported. Examples include paper studies and properties.
TRL 2	Technology concept and/or application formulated	Invention begins. On practical applications are speculative, and detailed analysis to s Examples are limited
TRL 3	Analytical and experimental critical function and/or characteristic proof of concept	Active R&D is initiated studies and laboratory the analytical predicti technology. Example not yet integrated or i
TRL 4	Component and / or breadboard validation in laboratory environment	Basic technological c establish that they wi "low fidelity" compare Examples include the in the laboratory.
TRL 5	Component and / or breadboard validation in relevant environment	Fidelity of breadboard significantly. The bas integrated with reaso elements so they can environment. Exampl laboratory integration

ACCELERATOR APPLICATION FORM

TRL	Description	Examples
TRL 6	System/subsystem model or prototype demonstration in a relevant environment	Representative model or prototype system, which is well beyond that of TRL 5, is tested in a relevant environment. Represents a major step up in a technology's demonstrated readiness. Examples include testing a prototype in a high-fidelity laboratory environment or in a simulated operational environment.
TRL 7	System prototype demonstration in an operational environment	Prototype near or at the planned operational system. Represents a major step up from TRL 6 by requiring demonstration of an actual system prototype in an operational environment (e.g., in an aircraft, in a vehicle, or in space).
TRL 8	Actual system completed and qualified through test and demonstration	Technology has been proven to work in its final form and under expected conditions. In almost all cases, this TRL represents the end of true system development. Examples include developmental test and evaluation (DT&E) of the system in its intended weapon system to determine if it meets design specifications.
TRL 9	Actual system proven through successful mission operations	Actual application of the technology in its final form and under mission conditions, such as those encountered in operational test and evaluation (OT&E). Examples include using the system under operational mission conditions.

Please indicate the TRL range of the research project based on the table above.

Entry TRL	<input checked="" type="checkbox"/>
Target TRL	<input checked="" type="checkbox"/>

2. DETAILS OF RESEARCH PROPOSAL:

2.1 Scientific Abstract (not more than 300 words)

2.2 Lay Abstract (not more than 300 words)

2.3 Research Objectives

Closing Date for Proposal Submission

Monday, 19 Sept 2022, 1600 hrs
(local standard time)

Proposal must be submitted online to :

**Programme Manager, Accelerator
Institute for Adult Learning
11 Eunos Road 8
#05-03/06, Lifelong Learning Institute
Singapore 408601
williamphayyh@ial.edu.sg
koktw@ial.edu.sg**

For CfP enquiries, you can contact:

William Phay
williamphayyh@ial.edu.sg

Where will you be in 20-30 years time?

SINGAPORE – Top companies with largest market cap		
2020	2021/22	2040
Singtel (38.5b)	DBS (55b)	?????
DBS (22b)	SEA (Garena) (40.7b)	
SIA (21b)	OCBC (36.4b)	
OCBC (11.6b)	UOB (31.4b)	
UOB (11b)	Singtel (30b)	
SPH (10b)	Wilmar International (18b)	
PAC CENT (7b)	SIA (11b)	
ST Eng (6.3b)	CapitaLand (10b)	
CDL (5.7b)	Grab Holdings (9.6b)	
VCORP (4.8B)	ST Engr (9b)	

USA – top companies with largest market cap		
1990	2021/22	2040
Bank of Japan (104b)	Apple (2.05T)	?????
Sumitomo Bank (73b)	Saudi Aramco (1.92T)	
Fuji Bank (69b)	Microsoft (1.78T)	
Dai Ichi Kanoyo Bank (64b)	Amazon (1.56T)	
Exxon Corp (63b)	Alphabet (1.39T)	
General Electric USA (58b)	Facebook (838b)	
Tokyo Electric Power (56b)	Tencent (752b)	
IBM (55b)	Alibaba (614b)	
Toyota Motor Corp (53b)	Berkshire (587b)	
Americal T&T (48B)	Taiwan Semiconductor (534b)	





THANK YOU