

18 & 19 JAN 2024

 ADULT
LEARNING
XCHANGE

OUR LEARNING FUTURES

LEARN FAST | LEARN WIDE | LEARN WELL

Organised by

 IAL
INSTITUTE FOR
ADULT LEARNING
SINGAPORE

 AN INSTITUTE OF
SUSS
SINGAPORE UNIVERSITY
OF SOCIAL SCIENCES

Supported by

 SKILLSfuture SG

How does a traditional university create marketable educational programmes to stay relevant?



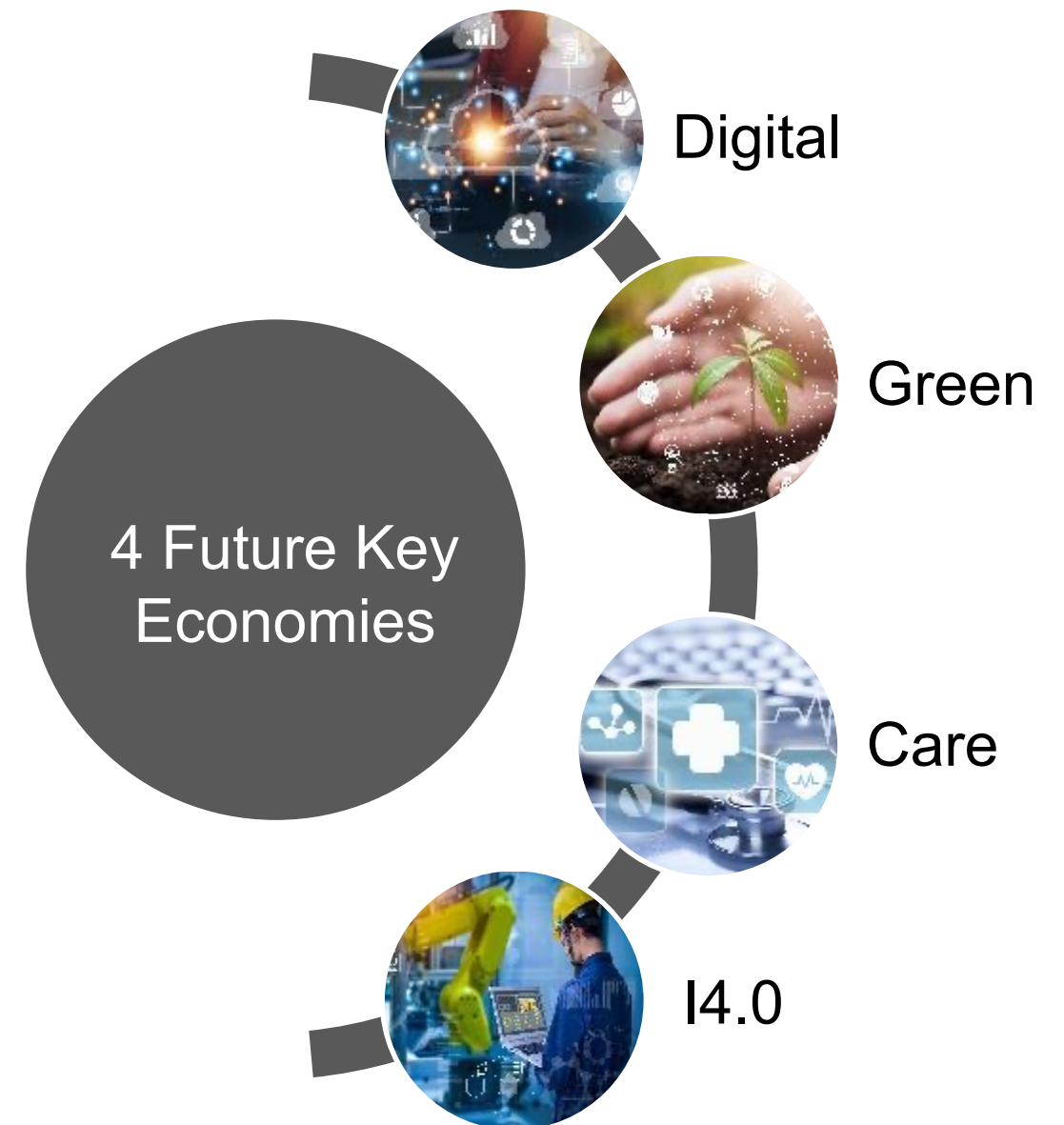
Suresh H Punjabi
Associate Dean
School of Continuing and Lifelong Education
NUS

SKILLS THAT MATTER IN THE FUTURE

“

In Singapore...we do not just invest in the first 15 years of an individual's formal schooling, but we also invest in the next 50 years of [their] working life.

Chan Chun Sing
Minister for Education
NUS Lifelong Learning Festival 2022





**Dynamic &
Unpredictable
Workplaces
demand
Adaptable &
Agile Workers**

LIFELONG LEARNING

LEARNING FOR
EMPLOYABILITY

LEARNING
FOR LIFE

LIFELONG EDUCATION @ NUS

Pre-PET*

PET*

CET*

Youth
Programmes

Credit Bearing

Non-
Credit
Bearing

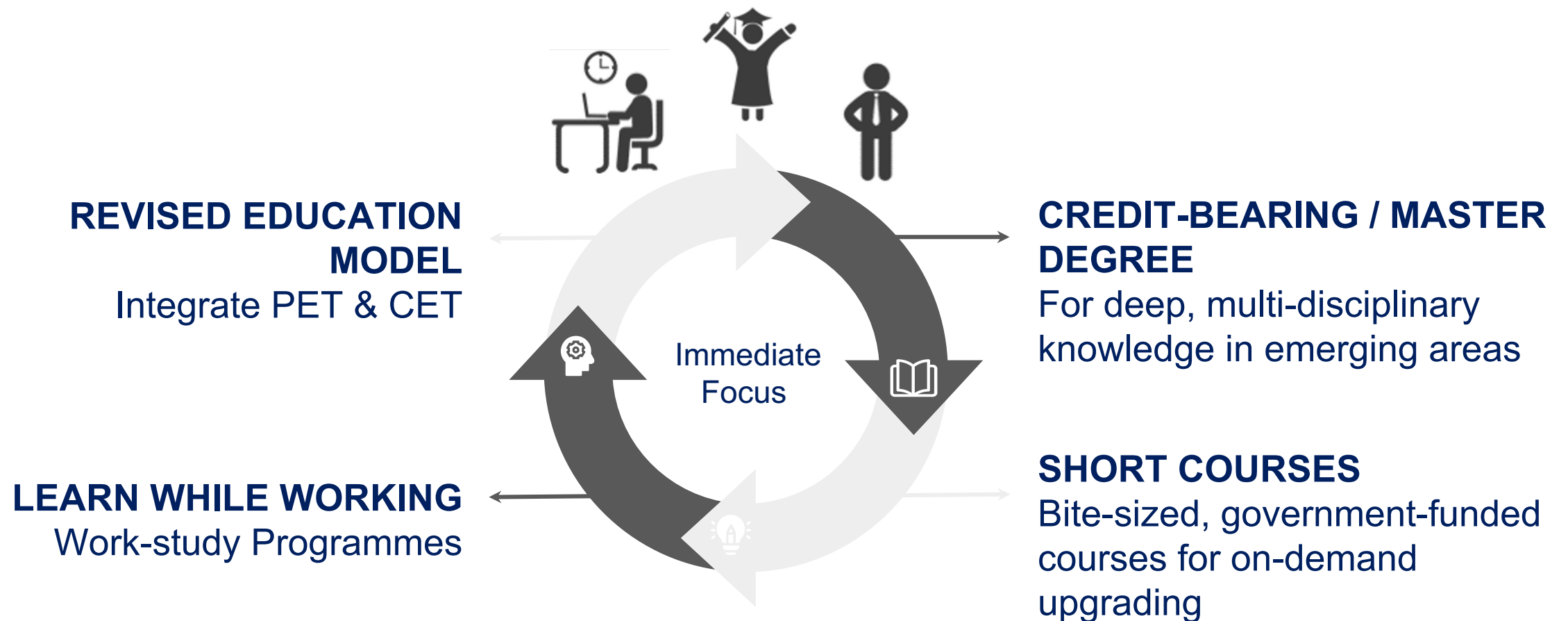
Learner-driven

Driven by self-interest, learning for self-actualisation

*PET: Pre-Employment Training | CET: Continuing Education and Training

REIMAGINING LIFELONG EDUCATION @ NUS

STUDENTS FOR LIFE COMMITMENT



OBJECTIVES OF LIFELONG EDUCATION @ NUS



OFFER HIGH-QUALITY INDUSTRY-RELEVANT CONTENT

Accessible to adult learners through flexible, innovative pathways & a market-driven strategy



EMPOWER ALUMNI FOR FUTURE OF WORK

Encourage alumni to embrace Lifelong Learning to remain future-ready

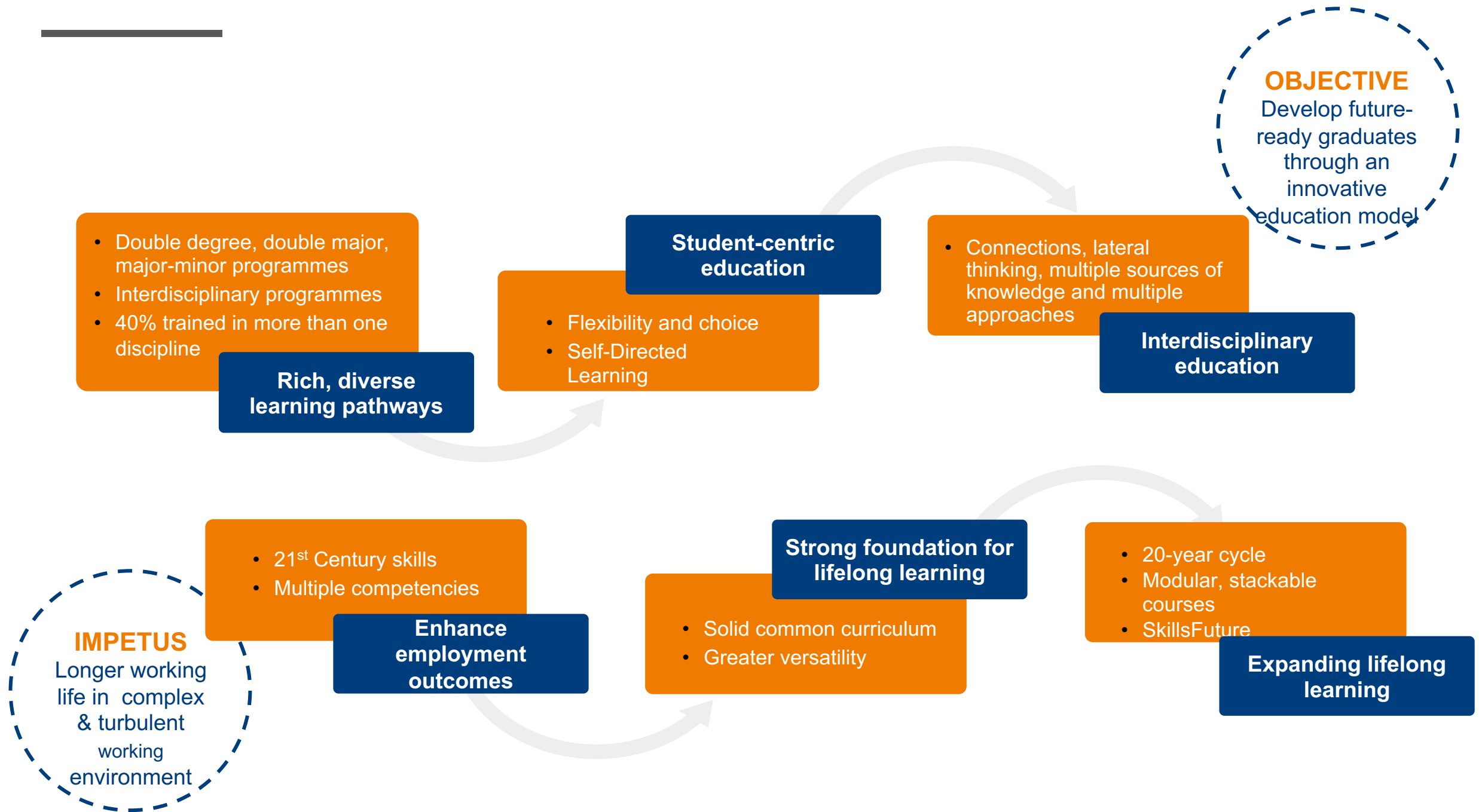


SUPPORT WORKFORCE & ENTERPRISE TRANSFORMATION

Partner government agencies to upskill, & help Singapore workforce & enterprises compete globally

EDUCATION REFORMS for PET

KEY DIRECTIONS



GENERAL EDUCATION

SIX PILLARS



CULTURES & CONNECTIONS

Global citizenry
Adaptability to cultural contexts and environments



CRITIQUE & EXPRESSION

Thoughtful critique
Communication of ideas
Listening skills



SINGAPORE STUDIES

Understanding of Singapore
Historical, economic, societal, and cultural context

Broad-based intelligences for academic and career pursuits
21st century skills for academic and career pursuits



DATA LITERACY

Quantitative reasoning
Numerical sense-making



DIGITAL LITERACY

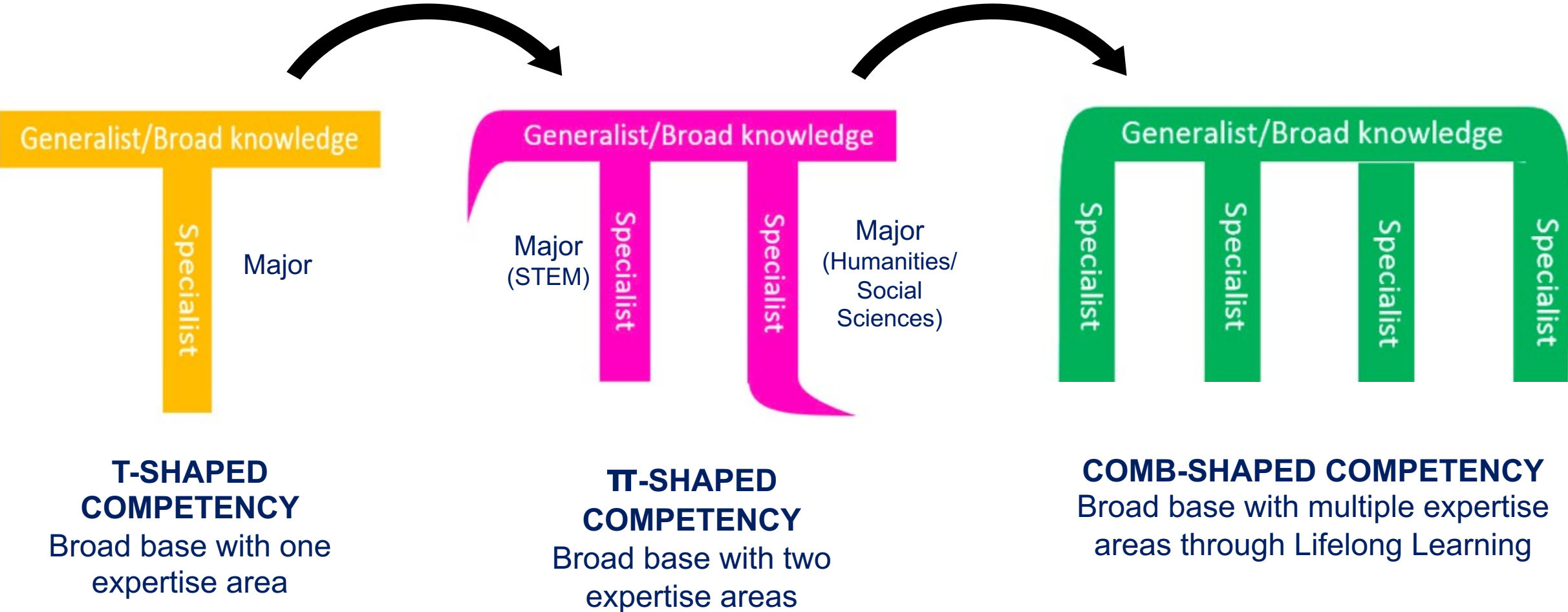
Computational thinking
Artificial intelligence



COMMUNITIES & ENGAGEMENT

Service learning
Engagement in broader societal issues

DEVELOP FUTURE-READY GRADUATES THROUGH A LIFELONG EDUCATION MODEL



EDUCATION REFORMS

KEY INITIATIVES

①

General Education



②

College of Humanities
and Sciences

CHS

③

College of Design
and Engineering

CDE

④

Faculty of Law



⑤

Health Sciences



⑥

NUS College



⑦

School of Computing

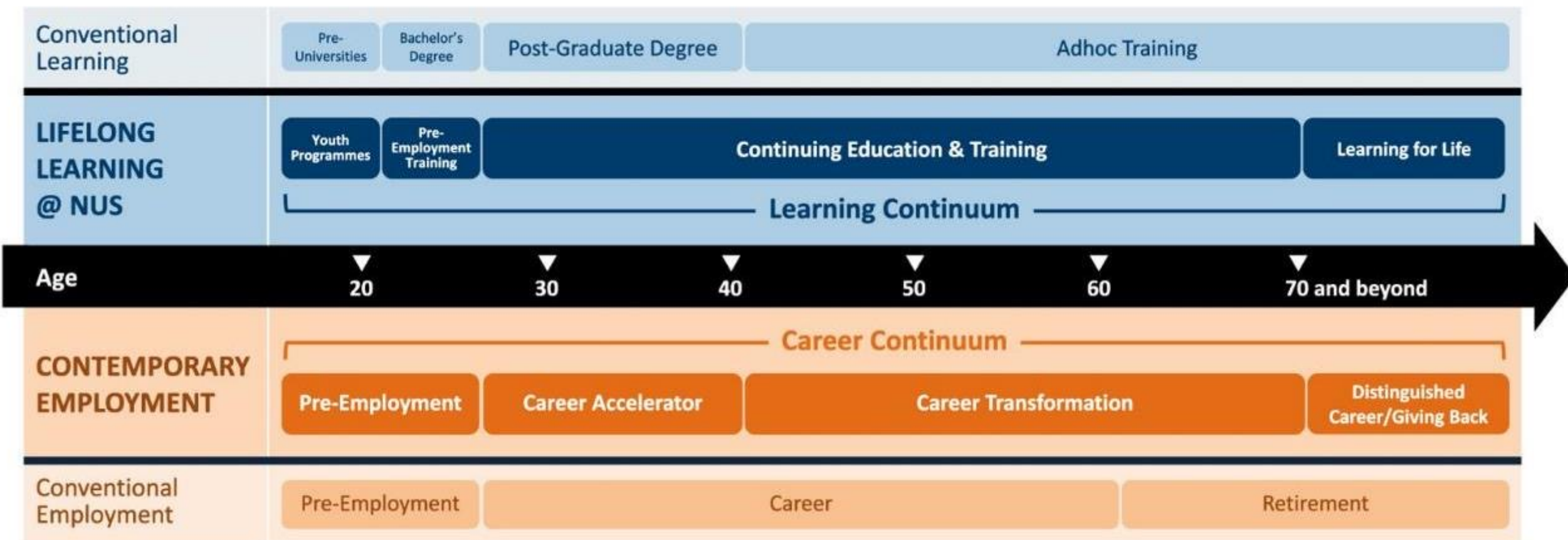


⑧

Business School



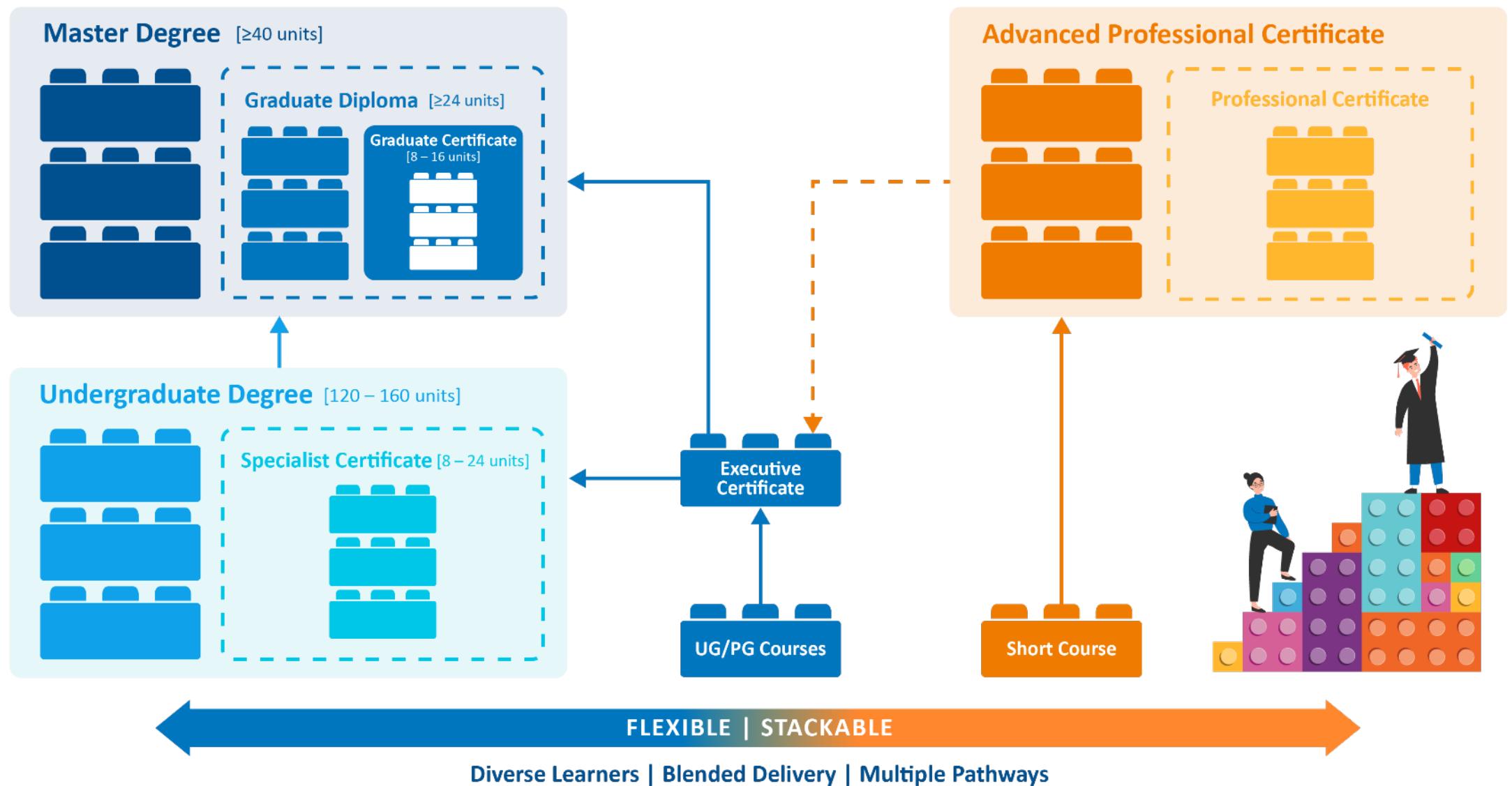
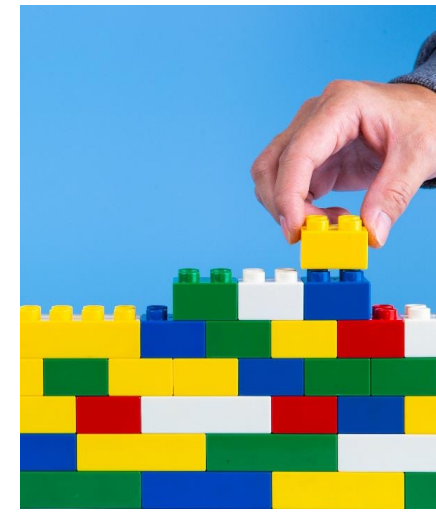
COMPLEMENTARY LEARNING AND CAREER CONTINUUMS (for CET)



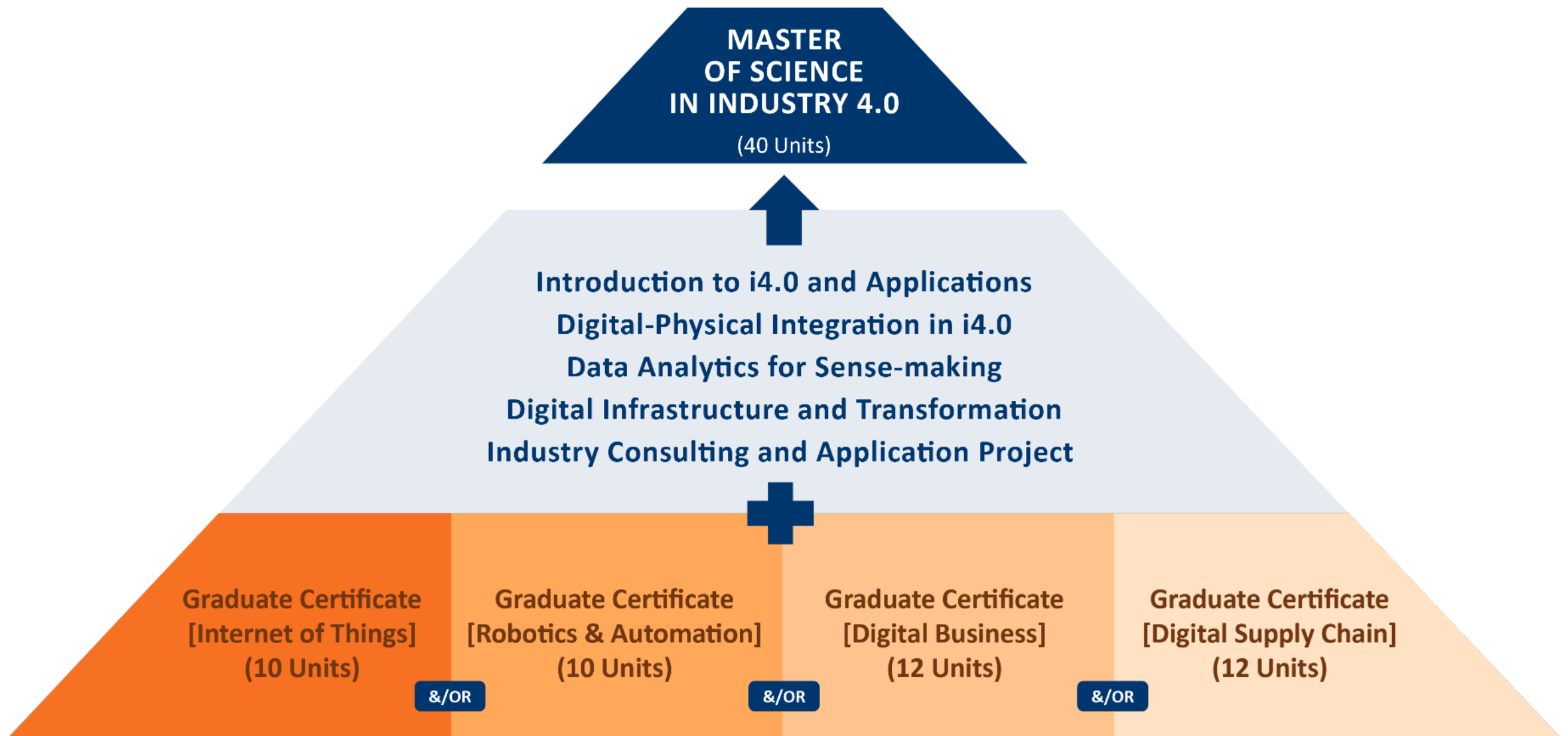
NUS MICRO-CREDENTIALS

FLEXIBILITY & STACKABILITY

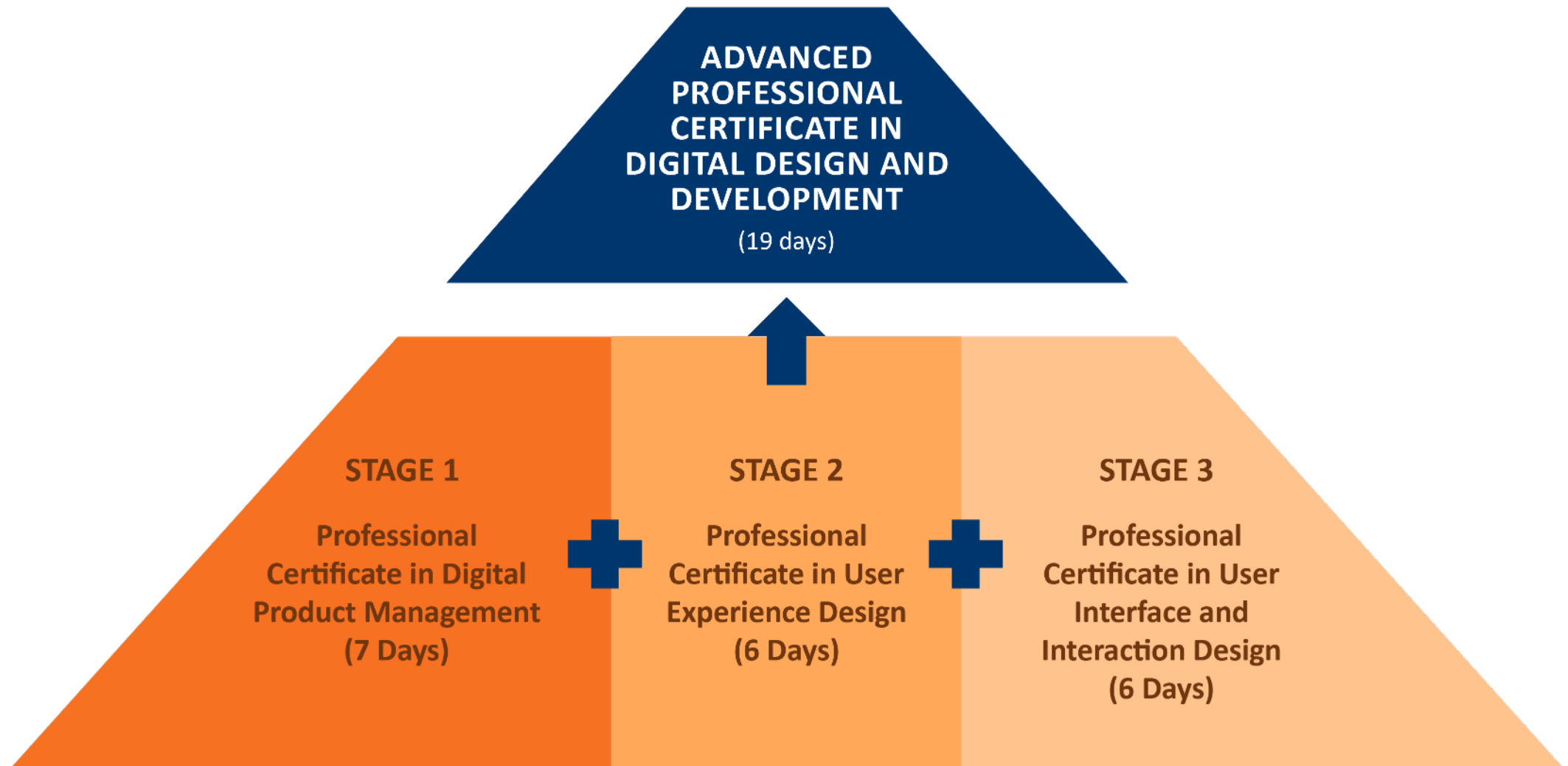
CET @ NUS



STACKING: GRADUATE CERTIFICATE



STACKING: PROFESSIONAL CERTIFICATE



INDUSTRIAL ENGAGEMENT

All You Can Learn

- Launch of **NUS AYCL** initiative in **2018**
- Core group of strategic corporate clients
- Focus: Demand Aggregation, Deep-skilling of workforce
- Renewal of AYCL Initiative in **2022**
- Training places clocked to date **>3400** from AYCL partners

AYCL PARTNERS



Collaboration with SBS Transit for enterprise formation (Sep 2022)

DEMAND-SENSING



EXECUTIVE MASTERCLASS WITH UBS, NTUC INCOME



INAUGURAL NUS LIFELONG LEARNING FESTIVAL



AGGREGATING DEMAND FOR NICHE DEEP-TECH COURSES (SATELLITE TECHNOLOGY, COASTAL ENGINEERING)



5G LEARNING FESTIVAL @ NUS

WORKFORCE TRANSFORMATION

SKILLSFUTURE CAREER TRANSITION PROGRAMME (SCTP)

- SkillsFuture Singapore (SSG) initiative
- Mid-career individuals acquire in-demand, industry-relevant skills
- Train & Place Programmes
 - 3 - 4 months
 - Training courses & other immersive learning activities
 - Career coaching and counselling services



NUS ICT ACADEMY: IMDA-APPOINTED TRAINING PARTNER

IMPETUS

RESKILL 20% of Singapore's ICT workforce disrupted by technological advances

RESPONSE

ASSEMBLE Participating Schools Committee (PSC) comprising CDE, FOS, NUS-ISS, SOC, & SCALE

ENGAGE with Industry Work Groups (IWG)

OBJECTIVE

DELIVER 3000 training places (900 in AI & related disciplines)

FACILITATE 500 job transformations through Career Conversion Programmes



NEW WORLD-CLASS, MARKET-DRIVEN, INDUSTRY-RELEVANT CET PROGRAMMES



MASTER DEGREES IN THE FUTURE ECONOMIES



Digital

MSc (Computing for Non-Computing Professionals)

MSc (Computer Engineering)

MSocSc (Communications)



Green

MSc (Sustainable and Green Finance)

MSc (Energy Systems)

MSc (Biodiversity Conservation and Nature-based Climate Solutions)



Care

MSc (Biomedical Informatics)

MSc (Biomedical Engineering)

Master of Social Work (Revamped)



i4.0

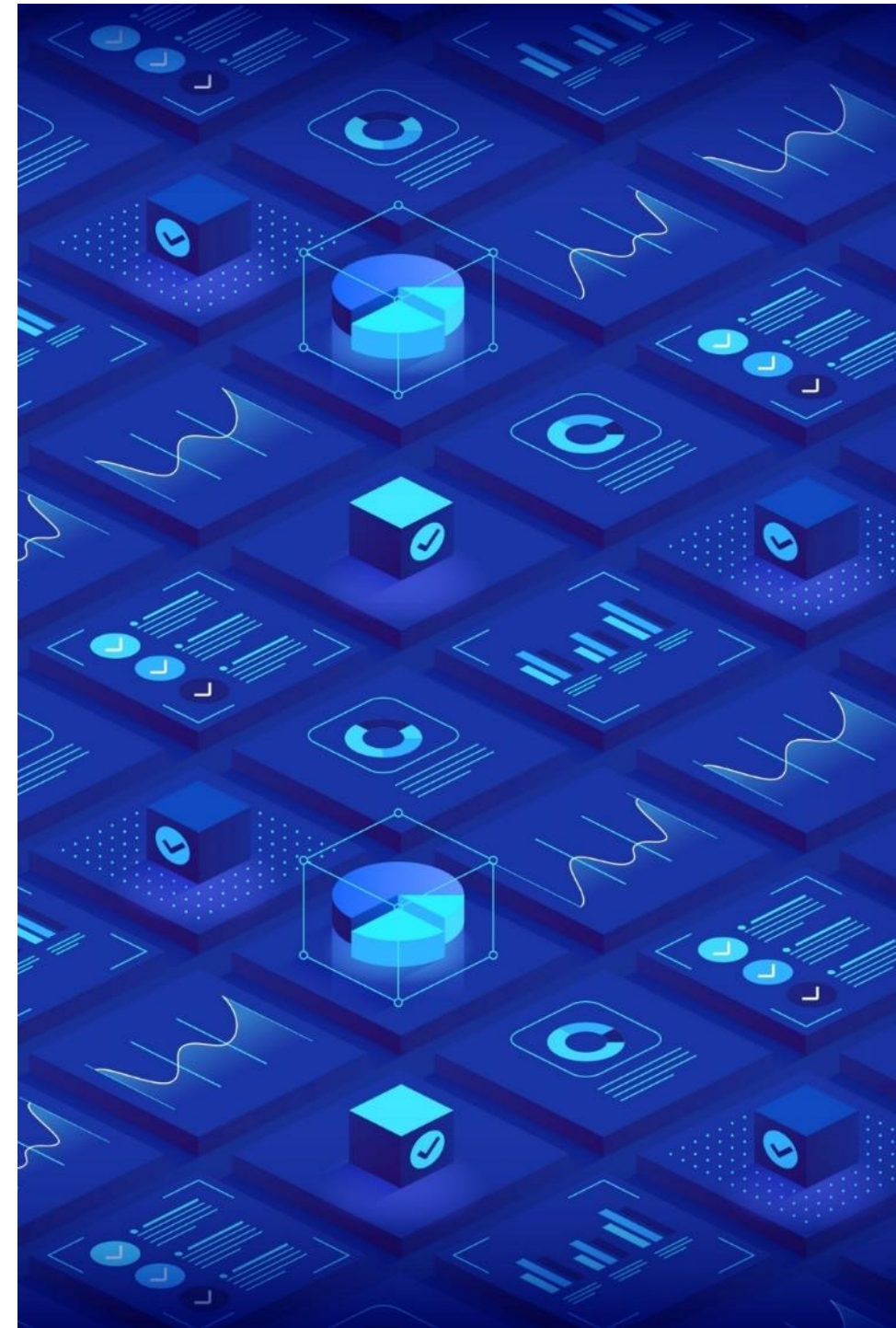
MSc (Industry 4.0)

MSc (Maritime Technology and Management)

MSc (Biotechnology)

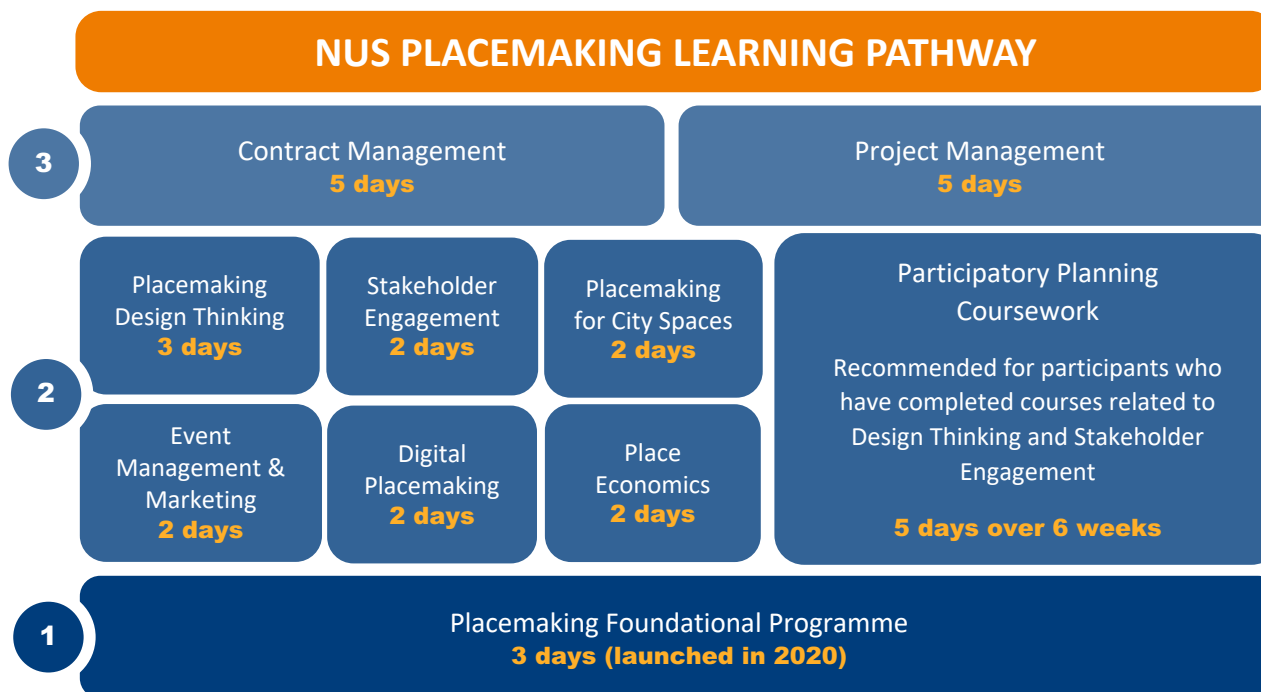
BACHELOR OF INFORMATION TECHNOLOGY (BIT)

- 120 units
- Open funnel admission
- Recognition of prior learning
- Flexible, modular workload
- Stackable pathways up to postgraduate level
- First intake AY2024/2025

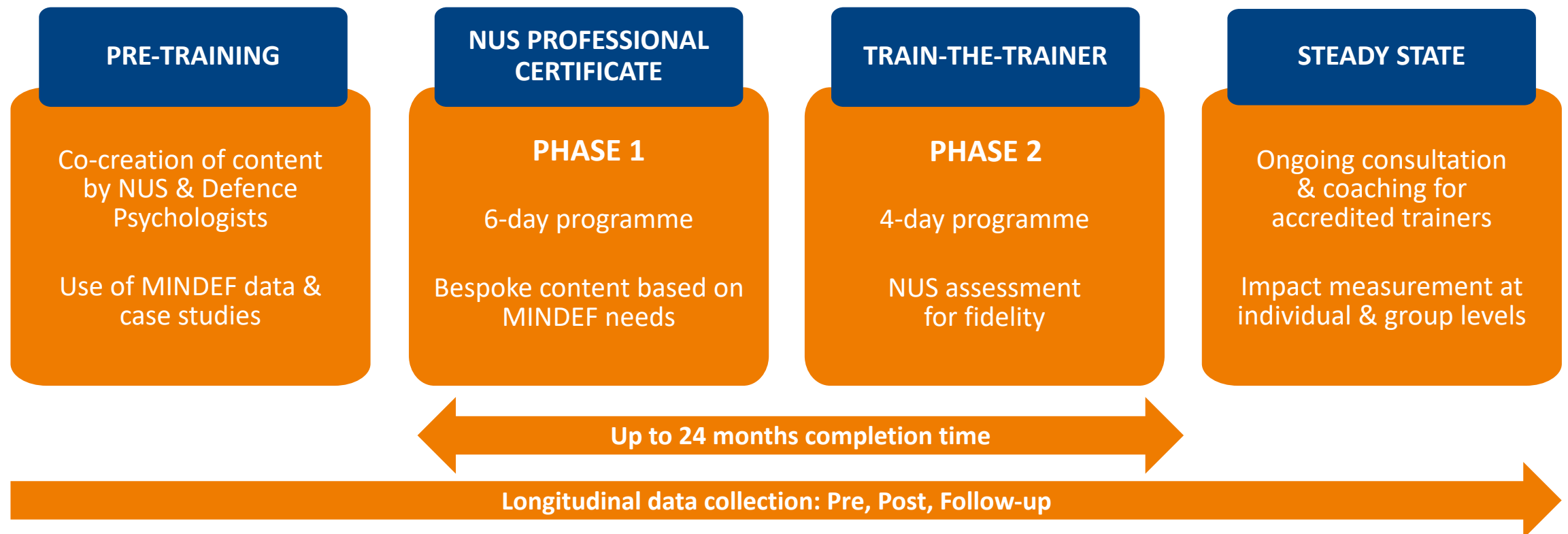


PROFESSIONAL CERTIFICATE IN PLACEMAKING

- Developed by FASS, CDE, & SCALE with Urban Redevelopment Authority (URA)
- Course content & case studies influenced by URA
- Target learners: Real Estate Developers, Urban Designers & Planners
- SSG-funded
- More multi-disciplinary level 4 courses in the pipeline



PROFESSIONAL CERTIFICATE IN PSYCHOLOGICAL SCIENCE



BESPOKE CORPORATE PROGRAMMES



Workshop format



Small groups for better engagement



Attended by industry leaders



Specific, targeted content



In summary

- Future skills
- Agile and Adaptable workforce
- Responding to needs
- Listening to our customers





THANK YOU