

# Re-connect | Re-imagine Lifelong Learning with SG Libraries

Lai Poi Shan (Ms)  
Deputy Director/Principal Librarian  
Adults & Seniors  
Programmes and Services  
National Library Board



1

SG Libraries are an everywhere, anytime, quality assured companion for learning at all ages

2

Even if you are not a book lover, use our programmes, services and communities to learn wide, learn deep and learn well

3

We want to bring our libraries to YOUR workplace

4

Connect and collaborate with us to build your capabilities, gain new connections, and contribute back

# OUR WORK IS GUIDED BY THE LIBRARY AND ARCHIVES BLUEPRINT (LAB) 2025

## Trends

**Economic disruptions requiring new skills**



**Increased polarisation and misinformation**



**Search for community and national identity & stories about who we are, who I am**



**Those less able and with less means get left behind**



## How LAB25 will meet this moment

### 1. LEARNING MARKETPLACE

To transform NLB into a national platform of lifelong learning with like-minded partners

### 2. INFORMED CITIZENRY

To nurture thoughtful people who reflect deeply on what they come across every day

### 3. SINGAPORE STORYTELLERS

To inspire discovery and creation of Singapore stories and instil a deeper appreciation of our collective experience

### 4. EQUALIZER

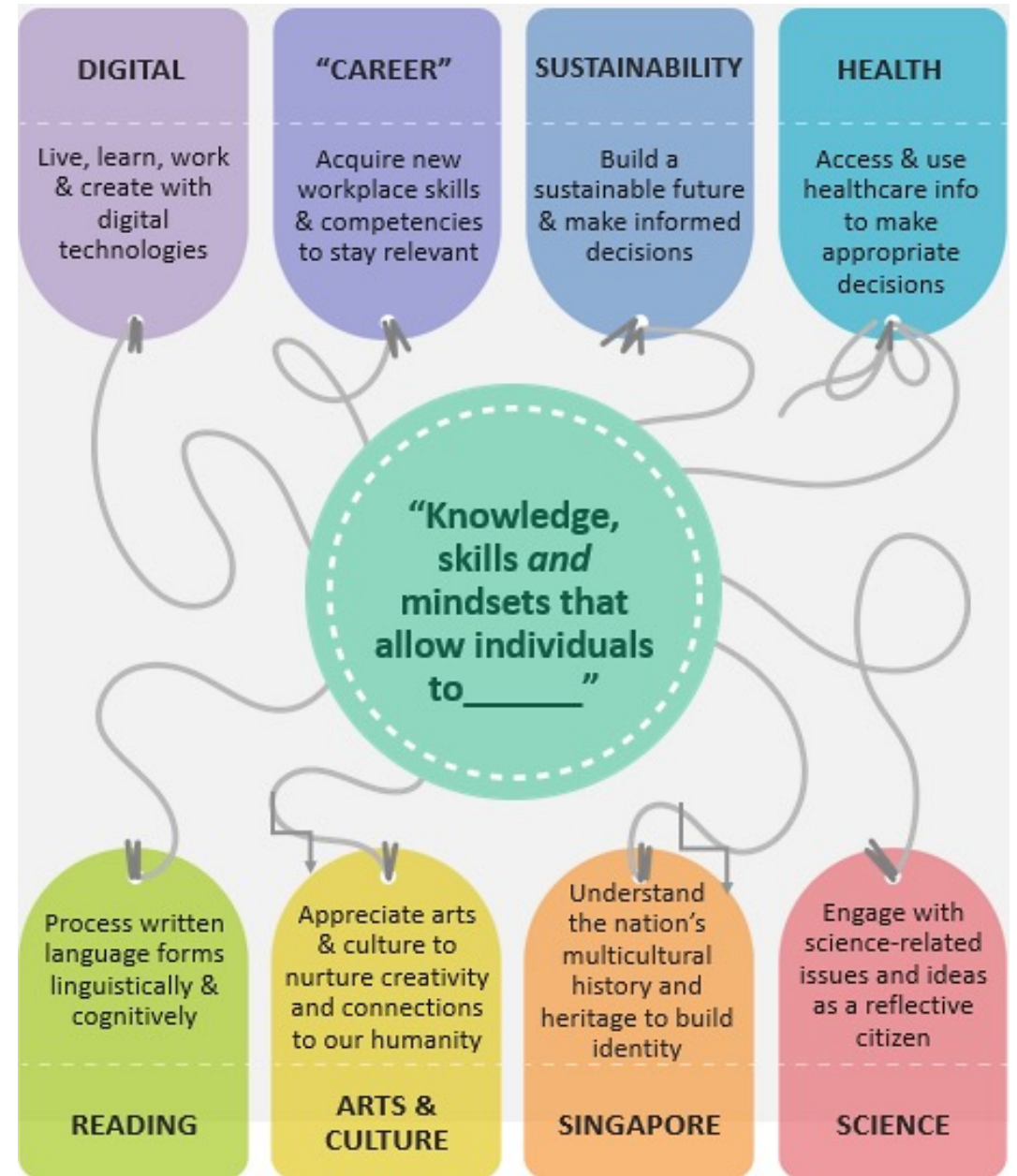
To bridge gaps, include more and empower all in this digital age

# OUR LEARNING FOCUS AREAS

Collections, progs and content will converge under 8 distinct, yet connected, **learning focus areas (LFAs)**.

Learning pathways curated across Public Libraries, National Library and National Archives (and even key external players), bringing together multiple touchpoints and resources more meaningfully.

Greater **connections, access & discovery**.



# MAKING LEARNING EASY & EFFECTIVE

## WE CATALYSE LEARNING THRU

### Discoverability

We make it easy for user to **first find and access** our content/ progs with multiple entry points at where user is

### Discovery

We **sign-post/ suggest other relevant** progs/ content of potential interest to user based on initial search

### Relevance

We curate progs/ content that is **meaningful** for our users

### Relatability

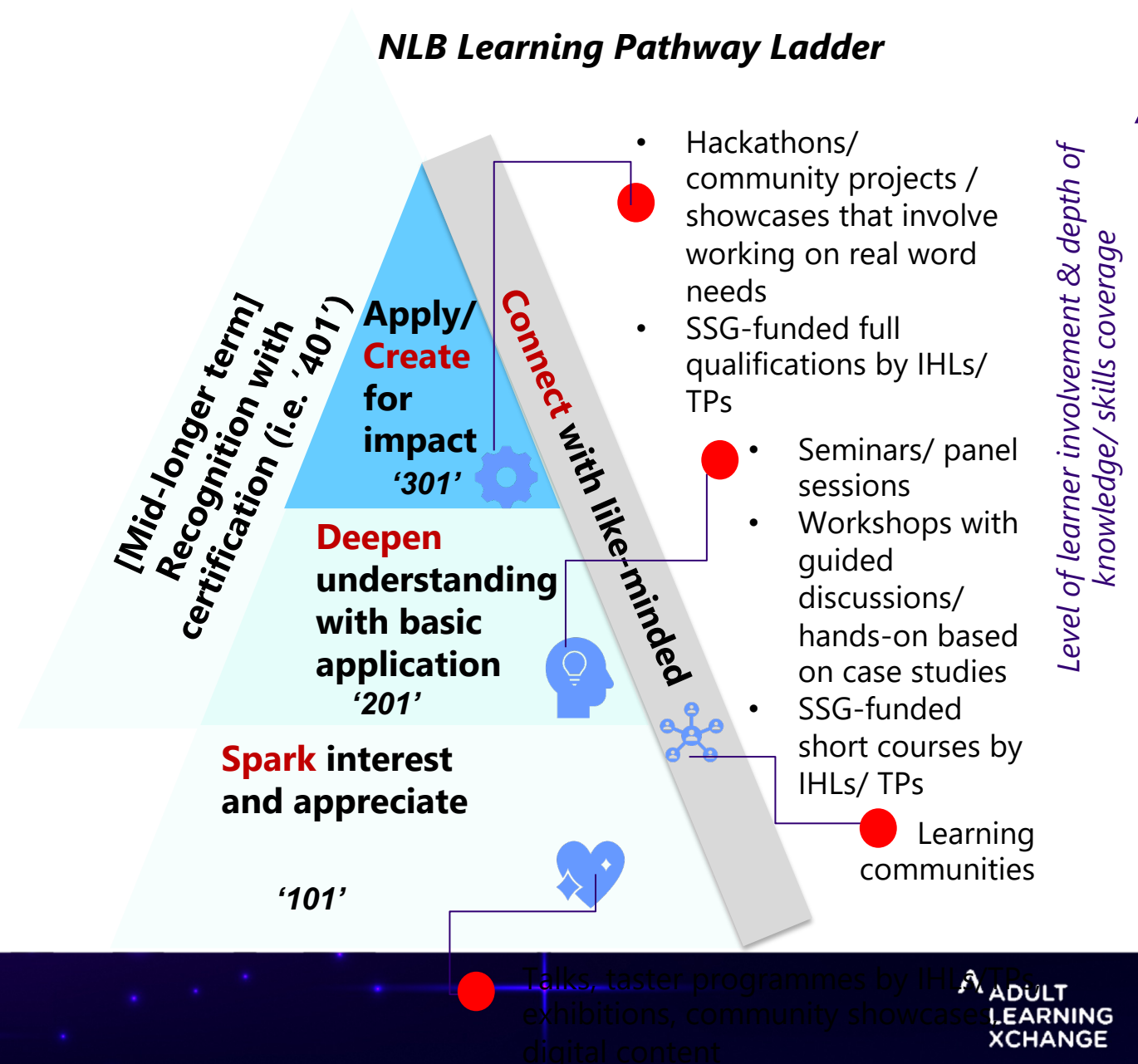
We angle our progs/ content to **resonate with users' life-stage priorities and needs;** create an emotive hook



Programmes

# WE 'BOOK-END' FORMAL COURSES & FORM LEARNING PATHWAYS

- Learning pathways **comprise different learning encounters** to nudge deeper and broader learning
- NLB collaborates with CET providers to **deliver taster programmes**; this collaboration aims to:
  - **Spark** interest of users who are open to learn (but have no time/ inclination to start off with a formal course)
  - **Sign-post** to accredited/ credentialled offerings of CET partners





**DIGITAL**

## PROGRAMMES



### Get prepared for the future workplace.

This series provides foundational knowledge and hands-on experience in trending areas such as AI, big data, blockchain and digital productivity suites.



### A new series on how technology impacts our daily lives.

Dive into topics such as AI, 5G, online privacy, media literacy, cyber-wellness

## SERVICES



### MakIT : A free-for-public library makerspace.

Experience the wonder of digital and tech based creativity to all library members.

- Allow library members to experience and tinker with fabrication technology (e.g. 3D Printers, Microcontrollers and Robots) and
- Drive the development of 21<sup>st</sup> century skillsets such as problem solving and maker mindset

## COMMUNITIES



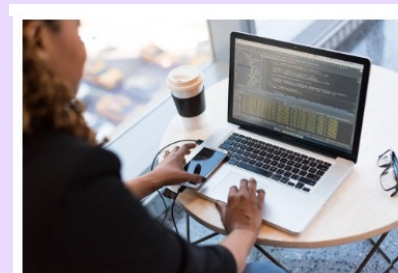
Code Breakers



Pi and Python

Members come together to learn coding and create simple projects e.g Burglar Alarm, Pill/Medication Box Reminder

Over 200 members and growing. Members join to learn about Chabot technology and create useful chatbot for the community/



Chatbot LC





**SUSTAINABILITY**

# WATCH AND LEARN IN MINUTES

## PLAYLISTS OF CAPSULE VIDEOS

### Explainer Series

Bite-sized content to improve awareness and knowledge on environment related issues

*Topics: Wildlife Conservation, Circular Economy, Green Economy, Forest & Plants.*

### Lost but Found Series

Features individuals and aims to educate users about a selected sustainability topic through a practical demonstration of their knowledge

*Topics: Local biodiversity, Food Security, Upcycling /Making furniture, Caring for the sea:*



Access our full list of Sustainability learning resources and many more on NLB website and/or mobile app.

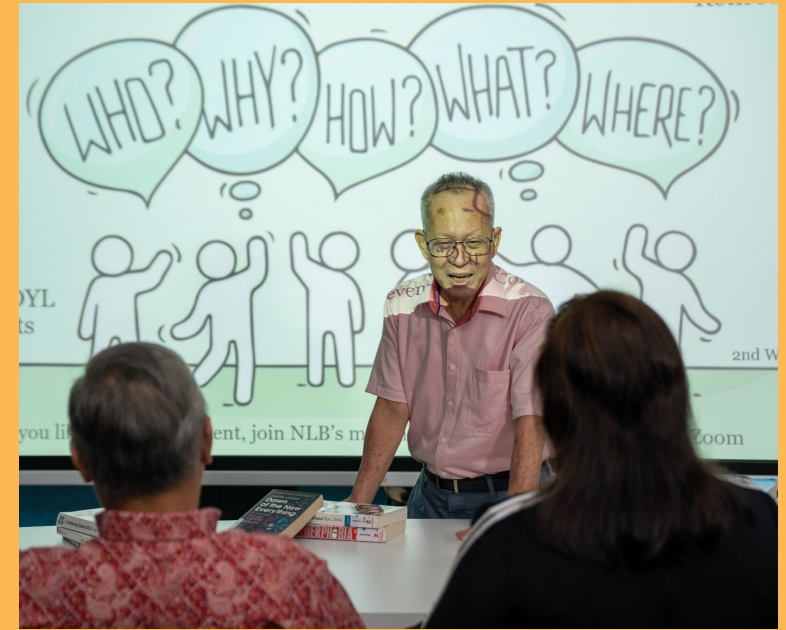
What are the different sub-themes under Learn X Sustainability?

Token available for correct answer!!!



Video Creators Club

# GROW YOUR LEARNING COMMUNITY@NLB



Digital Cafe



Young Writers Circle



Crafters Club



Ukulele Jammers

Keen to work with us, but  
prefer to remain independent?

No problem!

What is an  
External  
LXC?

---

NLB's LXC's are mostly seeded by NLB and are required to follow our programme and content guidelines closely.

**External LXC's are autonomous and have more flexibility.**

If your community already has a good system and culture going on, and you rather not follow our LXC requirements, this is the option for you. In exchange, you will receive some support and perks from the library!

# What We Offer our External LXC's



## Reach

**Get listed** in NLB's Library of Communities\* to raise awareness of your External LXC.

**Showcase your content** at our public libraries and engage with the wider community through exhibitions and book displays.

\*currently still in devt



## Venue

**Booking of library venues** for adhoc sessions, such as programmes, workshops and events that are open to the public. Applicable **up to 2 times a year** and subject to venue availability.



## Networking

Invitations to our LXC Networking events.

**Interact with other passionate leaders**, share experiences and dream up creative collaborations.



## Learning

Tap into a variety of curated resources to support the learning of your members – **Learning Packages** with books, programmes, articles, videos etc.

A red string is tied in a bow on a brown paper background. A white tag is attached to the string, featuring the text "Bringing our libraries to workplaces" in bold black font.

**Bringing our  
libraries to  
workplaces**

# REVAMPING OUR SERVICES WITH SKILLUP@WORK

**Objective:** To complement organisation's existing efforts to seed a **learning** culture at the workplace

## HOW DOES IT WORK?

1. Choose one or both learning pathways (**Artificial Intelligence and/or Leadership & Self-Development**)
2. Learn through curated, bite-sized experiences tailored for beginners starting in **mid-February**, held over **5 weeks**

## WHO IS IT FOR?

- Pilot is an invitation to **HR/L&D professionals** to assess suitability for company-wide rollout (no limit on no. of learners)
- Content suitable for employees in **operational functions** (e.g. admin executives, frontline officers, support staff)



# PREVIOUSLY UNDER READ@WORK

Reached 125 partner organisations



**CHANGI**  
airport group



**Read@Work**

## Reading Corners

The Read@Work team is excited to present "Reading Corners" - our service to help you seed a reading and learning culture at your workplace.

We will provide a set of curated books, based on your staff's reading interest and refresh the collection on a six monthly basis. All you need to do is set aside a small space for your staff to borrow and read the books. The best part is that you'll get to keep these books!

If your organisation is interested in this service, please drop an email to sarannya\_anil@nlb.gov.sg and reena\_kandoth@nlb.gov.sg by 31 Jan 2020.

"Books serve to show a man that those original thoughts of his aren't very new after all."  
- Abraham Lincoln

### CURATED READS

**Creativity Quotient**

Being creative does not mean inventing the next big thing. In fact, let creativity come into play in your everyday life and you might see improved work processes, flow of ideas and refined business models. Check out the resources below for some insights and tips to spark your creative confidence.

**The Innovation Race: How to Change a Culture to Change the Game**  
by Andrew Grant and Gaia Grant  
Call no.: English 658.406 GRA-[BiZ]

All rights reserved:  
Milton: John Wiley & Sons Australia, 2016.

Is innovation always a race? With three core concepts - innovation with purpose, innovation for real growth and innovation applications - this book provides strategies and learning tools to nurture an innovative culture at your workplace.

Borrow the e-book [here](#).

Reading corners and curated reads

### PROGRAMMES

Take your pick from our selection of curated programmes across three tracks - Skills, Lisure and Lifelong Readers.

**Skills**  
Each session is an hour-long crash course by a professional trainer, featuring highlights from a full-day training course. Examples of topics include:

- Presentation Skills
- Networking
- Stress Management
- Design Thinking
- Data Visualisation

**Lisure**  
Each session features fresh perspectives about intriguing subjects, distilled from NLB's collection and delivered by a librarian. Examples of topics include:

- Sci-Fi Books You Don't Have to be a Nerd to Enjoy
- Discovering the World of Hayao Miyazaki
- Worlds Beyond Marvel and DC
- Making Sense of Poetry

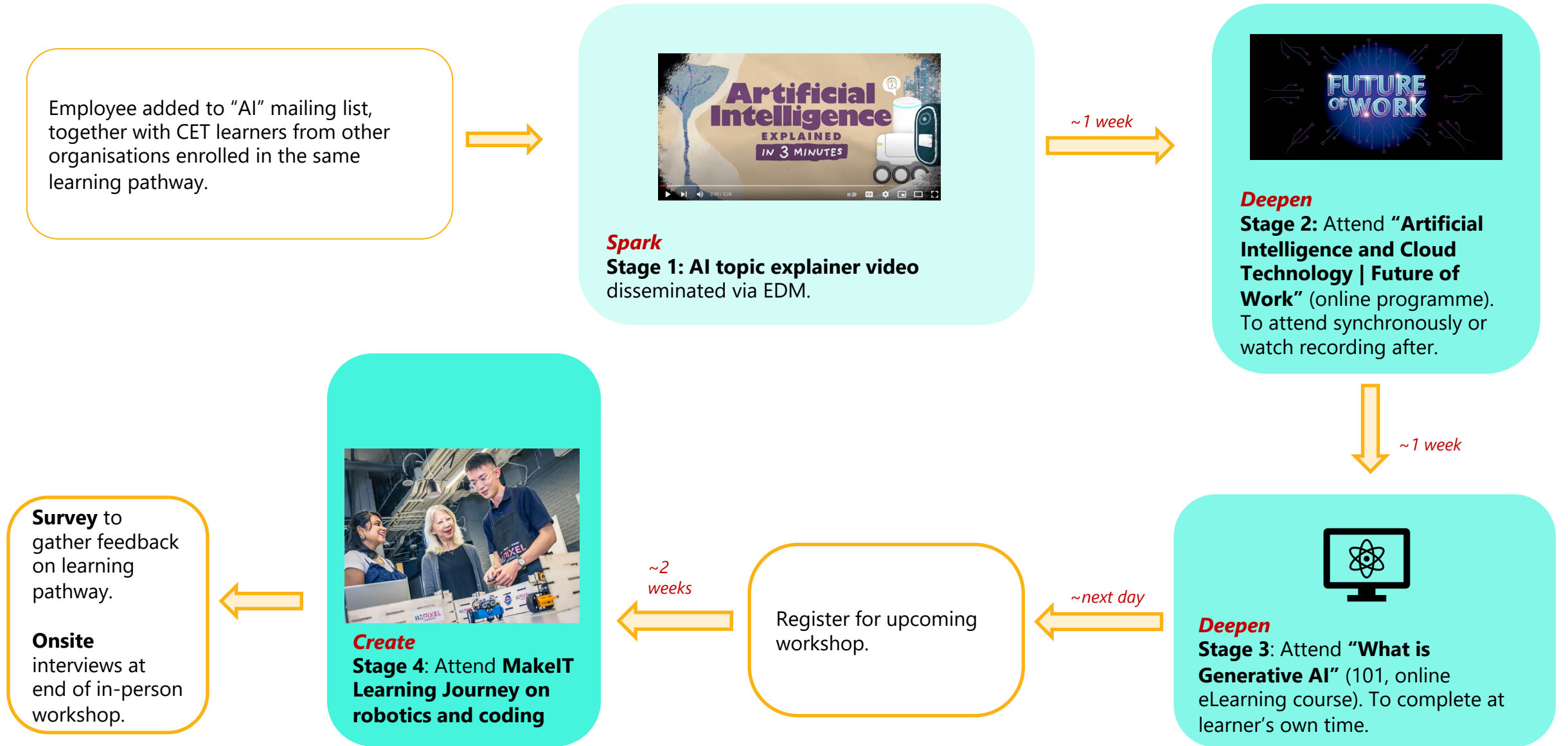
**Lifelong Readers**

- Outreach (NLB booth at your company's event)  
Let our librarians explain how easy it is to pick up and maintain a reading habit with the eResources available 24/7.
- Corporate Social Responsibility opportunities  
Help our beneficiaries become lifelong readers.

Programmes and talks



# ILLUSTRATIVE USER JOURNEY ON AI LEARNING PATHWAY



Titles of learning activities (e.g. online programmes) subject to changes.

# HOW IT BENEFITS WORKPLACES & EMPLOYEES

## Workplaces

- Augment organisation's learning initiatives via **curated** and **quality learning experiences** suited for **different learning preferences**
- Strengthen continuous learning culture at **no cost** and **minimal administrative work** for HR/L&D teams

## Individuals

- Learn and network in a **stress-free** manner (no assignments and assessments 😊) in a **structured** yet **flexible** way

# SKILLUP@WORK

Feb - Mar 2024

Scan this QR code for more information and to register!



[go.gov.sg/skillupwithnlb](https://go.gov.sg/skillupwithnlb)



1

If you are keen to **join NLB as an external learning community** or start one with us!

2

If you are keen to **explore programming &/or onsite pop-ups** to test new ideas &/or reach a wider audience

3

If you are keen to **introduce SkillUP@Work** at your workplace

4

If you have **ideas** on how NLB can be your lifelong learning buddy