

WSQ Advanced Certificate in Learning and Performance 2.0 (ACLP 2.0)

Course reference number:
TGS2022017395 (Blended Learning)
TSG-2023017923 (FOL)



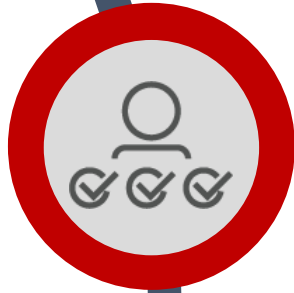
**A CUT ABOVE THE
REST**

www.ial.edu.sg/aclp



01 – WHAT IS ACLP 2.0?

IS IT APPLICABLE FOR ME TO BECOME A TRAINER?



02 – WHAT DOES ACLP 2.0 COVER?



03 – I AM READY!



04 – HOW DO I SIGN UP?

About ACLP 2.0

Advanced Certificate in Learning and Performance 2.0 (ACLP 2.0)

Equip Subject-Matter
or Domain Specialists
with **SkillsFuture
Singapore (SSG)**
recognised Training
and Adult Education
(TAE) competencies

Aligned with **industry
curated National Skills
Frameworks (SFw)**

Equip learners with
skillsets to **adapt,
adopt and facilitate
effective learning in**
the training
environment

Recognised by SSG to
perform the role of a
**Trainer and/or
Assessor of SSG-
funded**
**Certifiable WSQ and
Non-WSQ courses**

Who is ACLP 2.0 for?

For Trainers and Assessors of SSG-Funded Certifiable WSQ and non-WSQ Courses

Public Training Provider

- At least 80% of trainers and / or assessors with either ACTA or **ACLP** qualification or equivalent (**includes DACE and DDDL** Graduates)

In-House Training Provider

- At least 80% of trainers and / or assessors with WTP or WLF programme, or equivalent and

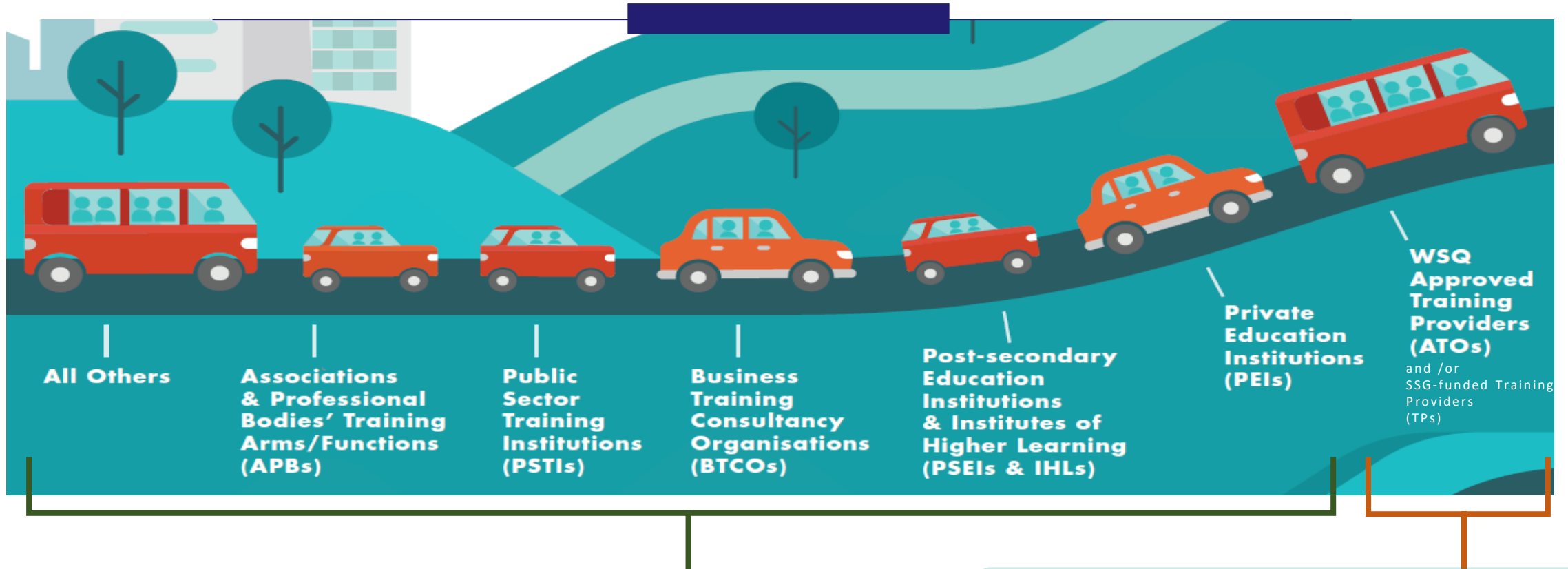
In-House Training Provider

- At least one Master Trainer with either ACTA or **ACLP** qualification or equivalent to function as in-house curriculum developer



All existing **WTP and ACTA graduates** continue to be recognised by SSG as having met the AE Qualifications Requirements for the training and assessment of SSG-Funded WSQ and Non-WSQ Certifiable Courses

Who is ACLP 2.0 for?



TAE Sector Training Organisations

- Non-SSG funded or [SSG Skills Future Credit \(SFC\)](#) courses.
- ACLP 2.0 is **NOT** a requirement.

ACLP 2.0 is a REQUIREMENT

Individuals performing the Role of a Trainer and/or Assessor of SSG-funded WSQ and non-WSQ Certifiable courses.



ACLP 2.0 is for you!

- **Adult Educator**
- **Be part of Singapore Training and Adult Education (TAE) community**
- **Contribute to Continuing Education and Training (CET)**
- **Be part of the National SkillsFuture Movement**



01 – WHAT IS ACLP 2.0?

IS IT APPLICABLE FOR ME TO BECOME A TRAINER?



02 – WHAT DOES ACLP 2.0 COVER?



03 – I AM READY!



04 – HOW DO I SIGN UP?

ACLP 2.0 Programme Objective

Prepare learners to:

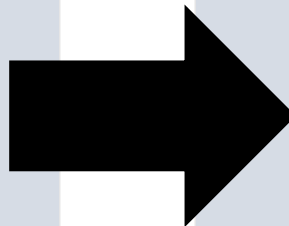


Adapt, adopt and facilitate blended learning solutions (including classroom, workplace and technology-enabled learning modes) for effective learning to meet performance outcomes

ACLP

129.5 hours

9-month



ACLP 2.0

88.5 hours

3-month

**Available from
Jan 2023!**

ACLP 2.0 Programme Structure

NEW

ACLP Module content

Duration

ACLP 2.0 Module content

Duration

M1	Facilitate Learning Experience for Adult Learners	23 hrs
M2	Adopt Skills Framework for Professional Growth	9 hrs
M3	Facilitate Technology-Enabled Learning	27 hrs
M4	Facilitate Workplace Learning	29 hrs
M5	Design Learning Solutions to Address Performance Needs	25 hrs
E1	Interpret WSQ and Assess Competence	16.6 hrs

129.5 hrs

M1P	Facilitate Learning Experiences for Adult Learners and Assess Competence based on Skills Framework	52 hrs
M2P	Facilitate Technology-Enabled Learning Delivery	21.5 hrs
M3P	Facilitate Workplace Learning Delivery	15 hrs

88.5 hrs

(not including **3hr Asst**)

What does ACLP 2.0 Cover?

M1P

Facilitate Learning Experiences
for Adult Learners and Assess
competence based on Skills
Framework

Develop your knowledge, abilities and
dispositions to effectively acquire facilitation
and assessment skills in the context of
Singapore's SFw model



Delivered and assessed in an integrated approach



Building on the Technical Skills and Competencies of Skills Framework
Adoption (SFA), Learning Experience Delivery (LED) and Assessment Design
and Implementation (ADI).

What does ACLP 2.0 Cover?

M2P

Facilitate Technology-Enabled
Learning Deliver

Develop your knowledge, abilities, and
dispositions to facilitate a technology-enabled
learning experience for adult learners



Delivered and assessed in an integrated approach



Design with a what, who, where, when, why and how (5W1H) approach



Building on the Technical Skills and Competencies of Learner Profile Analysis
and Technology-Enabled Learning Delivery

What does ACLP 2.0 Cover?

M3P

Facilitate Workplace Learning
Delivery

Equip yourself with the experience to develop,
plan and execute a simple workplace learning
experience



Equip a new/novice workplace trainer with a sequential framework for
planning and conducting workplace learning activities

The Key Changes

1



DURATION

- **Day Class:**
6.5 months → 3 months
- **Eve/Sat Class:**
9-12 months → 3 months

Shorter go-to-market is beneficial for learners!

2



CONTENT

- **All** Ability (A) and Knowledge (K) statements as prescribed by the TSC
- **Reduced** Assessment Methods used (~ 50%)

Rigor of Assessment will be maintained

3



ASSIGNMENT

- **Reduced** number of Assignments (~ 50%)
- **Protected time** to do Assignments
- **Immediate Feedback** from Facilitators

More Work-Study-Life balance

Still uncertain?

Attend group advisory session

IAL » IAL Programmes » Continuing Professional Development » In Conversation with AEs:...

Community Outreach and Support Services

In Conversation with AEs: Should I Become a Freelance AE?

Singaporean/PR: S\$16.05 |
Others: S\$21.40 w/GST
AEN Member

Singaporean/PR: S\$16.05 |
Others: S\$21.40 w/GST
Non-AEN Member

AE Career Advisory
Speaker

7:00pm – 9:00pm
Duration

[SCHEDULE / APPLY](#)

This is a fully online session conducted via ZOOM. Participants can participate in the session from any venue of their convenience with a laptop / device that is compatible with ZOOM. More details on participating in the session will be send to the confirmed registrants.

Scan to check out the next session!





01 – WHAT IS ACLP 2.0?

IS IT APPLICABLE FOR ME TO BECOME A TRAINER?



02 – WHAT DOES THE ACLP 2.0 COVERS?



03 – I AM READY!



04 – HOW DO I SIGN UP?

ACLP 2.0 Programme Entry Requirements



English language at GCE 'O' Level of C6 and above, or WSQ Workplace Literacy skills of Level 6 and above



Possess appropriate level subject matter specialisation and industry experience, relevant for the design, facilitation and assessment of learning



Possess basic information and communication technology (ICT) skills. Possess a Laptop – Recommended

Cohort-based learning



Aspiring
TAE professionals



Existing
TAE professionals



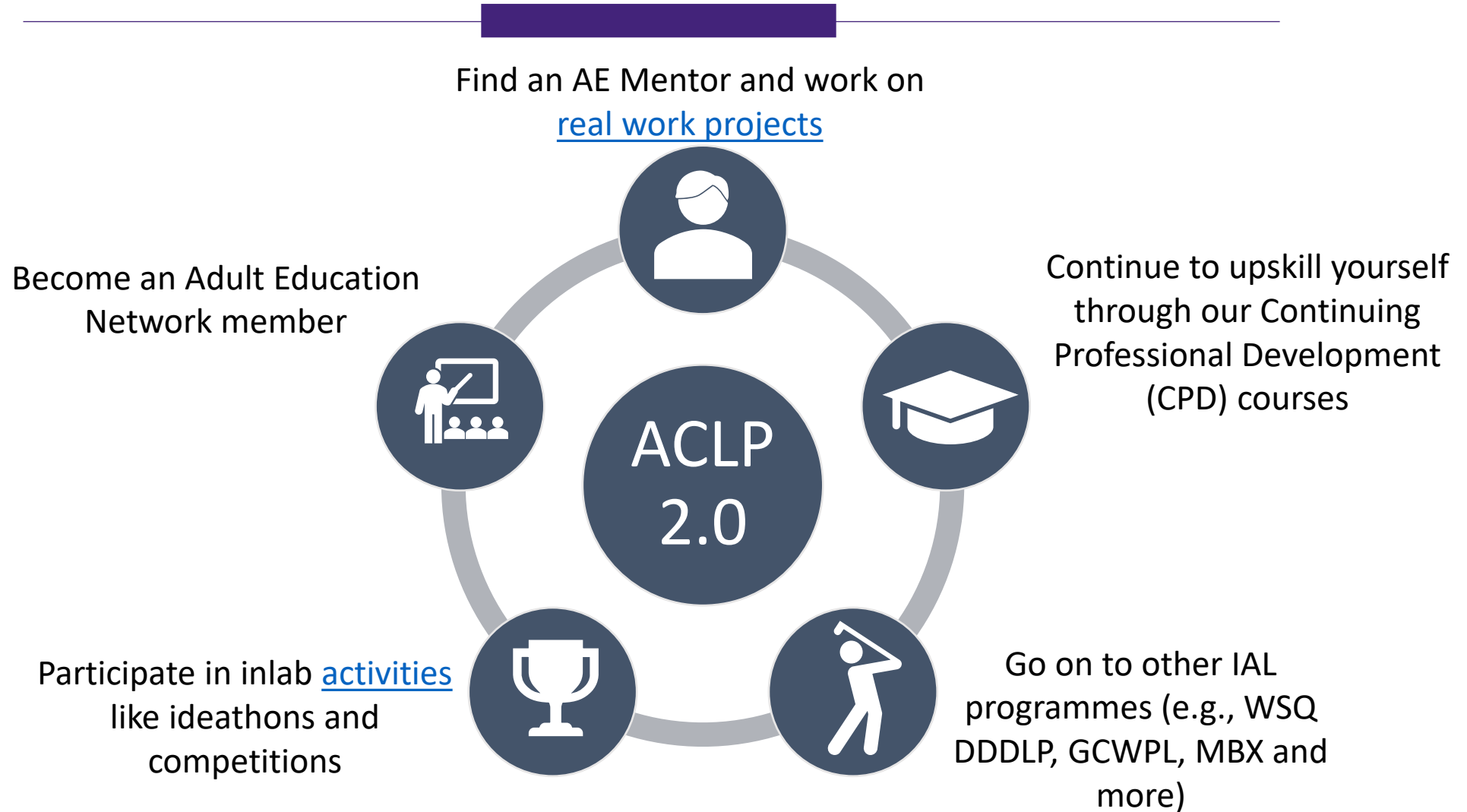
Professionals
in the fields of L&D,
OD, HR and more

Programme fees

	Before GST	After 8% GST*
Application Fee (one-time, non-refundable)	\$60	\$64.80
Full Programme Fee	\$5500	\$5940
Singaporean Citizens and PRs	\$1650	\$1782
Singaporean Citizens 40 y.o. and above	\$550	\$682

**The fees are inclusive of prevailing GST and subject to change. IAL reserves the right to amend this information without prior notice.*
For full details on the available funding schemes, <https://www.ial.edu.sg/learn-at-ial/funding/skillsfuture-funding.html>.

What happens after ACLP 2.0?





01 – WHAT IS ACLP 2.0?

IS IT APPLICABLE FOR ME TO BECOME A TRAINER?



02 – WHAT DOES THE ACLP 2.0 COVERS



03 – I AM READY!



04 – HOW DO I SIGN UP?

Viewing available ACLP 2.0 schedules on IAL's Website

Visit IAL's website:

www.ial.edu.sg/aclp

Select your preferred
dates for
COHORT BASED LEARNING

Course Dates

For organisations keen on embarking on the ACLP 2.0 programme for your workforce, contact us via the form below to find out more.

[Contact us](#)

25 Jan 2023 - 20 Apr 2023

[View Calendar Dates >](#)

[Enrol Now](#)

30 Jan 2023 - 14 Apr 2023

[View Calendar Dates >](#)

[Enrol Now](#)

31 Jan 2023 - 13 Apr 2023

[View Calendar Dates >](#)

[Enrol Now](#)

[View More Course Dates](#)



Important note

If you are currently attending or have attained any modular Statement of Attainment (SOA) from the WSQ ACLP, you are not eligible to enrol for the WSQ ACLP 2.0.

For enquires on the completion of your WSQ ACLP, write in to <https://feedback.ial.edu.sg>.

Viewing available ACLP 2.0 schedules on IAL's Website

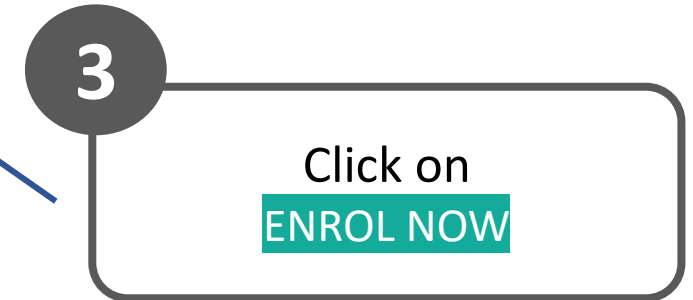
Course Dates

For organisations keen on embarking on the ACLP 2.0 programme for your workforce, contact us via the form below to find out more.

Contact us

25 Jan 2023 - 20 Apr 2023 View Calendar Dates >	Enrol Now
30 Jan 2023 - 14 Apr 2023 View Calendar Dates >	Enrol Now
31 Jan 2023 - 13 Apr 2023 View Calendar Dates >	Enrol Now

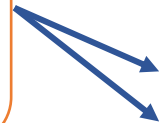
[View More Course Dates](#)



Viewing available ACLP 2.0 schedules on IAL's Website



**Expand the various
module tabs to view
session & assessment
dates of each module**



Select Your Course Schedule

Please check that you are available to attend all class timings and dates.

25 Jan 2023 to 20 Apr 2023 ▾ Download Schedule Table Enrol Now

Intake: ACLP 2.0 Jan 2023 (Day) B1-7
Max Pax: 15
Enrolled Pax: 10

Module: ACLP 2.0 M1P: Facilitate Learning Experiences for Adult Learners and Assess Competence based on Skills Framework ^

Module: ACLP 2.0 M2P: Facilitate Technology-Enabled Learning Delivery ^

Module: ACLP 2.0 M3P: Facilitate Workplace Learning Delivery ^



Select Your Course Schedule

Please check that you are available to attend all class timings and dates.

31 Jan 2023 to 13 Apr 2023 ▾

Download Schedule Table

Intake: ACLP 2.0 Jan 2023 (Day) B1-4
Max Pax: 15
Enrolled Pax: 9

Class is Full

**Please choose other cohorts if the
“Class is Full” appears.**

Important information

Withdrawal & Refund Policy

- **No refund of paid fees** if learner withdraws **midway** from course with no valid reason after course has commenced.
- For full refund of paid fees, withdrawal request must be submitted **10 working days** before course commences.

List of Recognised Absences

- Medical
- Reservist
- Court Appearance
- Bereavement of **immediate** family members

Class Rescheduling

- Fall short of the **minimum of 75% attendance requirement** → Not allowed to take assessment of that module.
- Rescheduling may be scheduled F.O.C **only for Recognized Absences**
- You may only reschedule **ONE-TIME throughout the ACLP programme** with a fee of \$110.00 (before GST) for reasons beyond the Recognized Absences.



SSG Requirements

Important information

Reassessment

- Not-Yet Competent (NYC) → You can request for a **one-time reassessment** within **5 working days** from the date of the last assessment with a **reassessment fee of \$160 (before GST)**.

Candidature Period

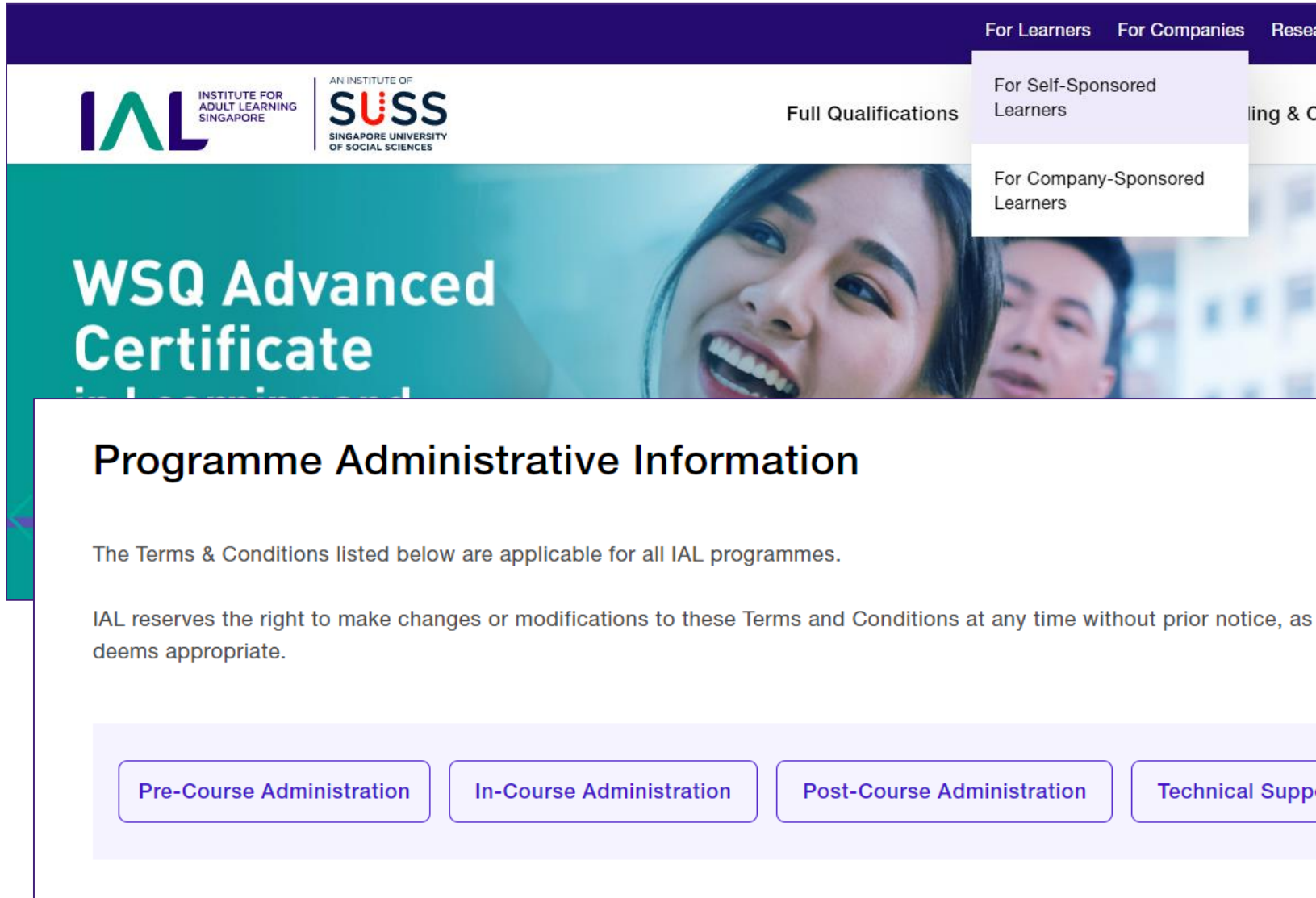
- Unable to complete your ACLP within **2 years** from the course start date → Your candidature will be **terminated**
- Full fees without funding will apply if you wish to re-enrol the same course.

Important information

Course Deferment

- If you cannot complete the course for **reasons beyond your control**, you can submit a deferment application at an applicable **administrative fee of \$110 (before GST)** with valid, sufficient supporting documents.
- Deferment approved → You may resume learning after 6 months from the Deferment Approval Date and to complete the remaining modules within **One Year** from the Deferment Approval Date.
- **Full fees without funding** will apply if you wish to re-enrol in the same course past the six months deferment period.

Frequently Asked Questions



The screenshot shows the IAL (Institute for Adult Learning) website. The header includes the IAL logo and the SUSS (Singapore University of Social Sciences) logo. A navigation bar at the top has links for 'For Learners', 'For Companies', and 'Research'. A dropdown menu is open under 'For Learners', showing options for 'For Self-Sponsored Learners' and 'For Company-Sponsored Learners'. The main content area features a large banner for the 'WSQ Advanced Certificate' with a background image of two smiling people. Below the banner, the section is titled 'Programme Administrative Information'. The text states: 'The Terms & Conditions listed below are applicable for all IAL programmes.' and 'IAL reserves the right to make changes or modifications to these Terms and Conditions at any time without prior notice, as it deems appropriate.' At the bottom, there are four buttons: 'Pre-Course Administration', 'In-Course Administration', 'Post-Course Administration', and 'Technical Support'.

For Learners For Companies Research

IAL INSTITUTE FOR ADULT LEARNING SINGAPORE

AN INSTITUTE OF SUSS SINGAPORE UNIVERSITY OF SOCIAL SCIENCES

Full Qualifications

For Self-Sponsored Learners

For Company-Sponsored Learners

WSQ Advanced Certificate

Programme Administrative Information

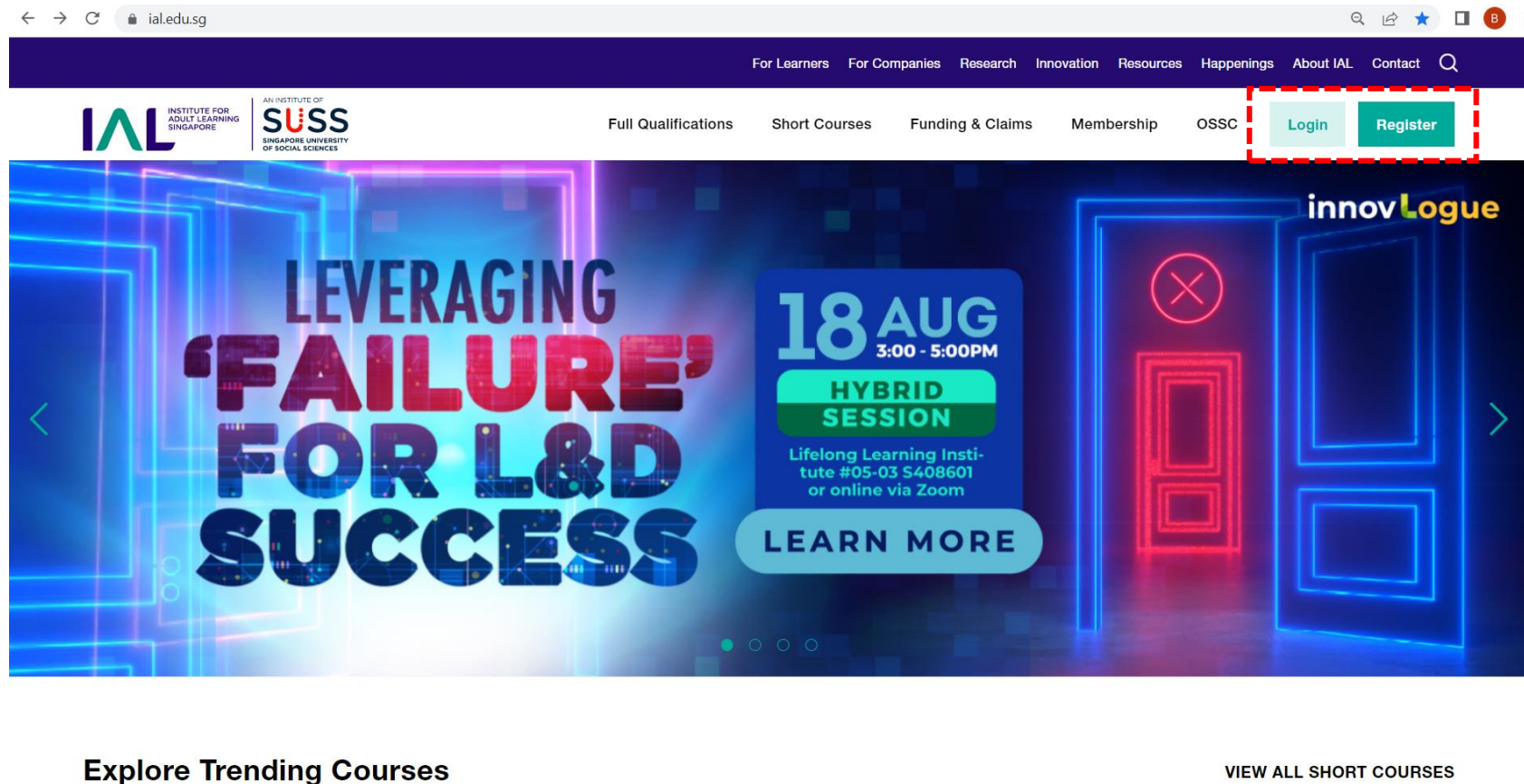
The Terms & Conditions listed below are applicable for all IAL programmes.

IAL reserves the right to make changes or modifications to these Terms and Conditions at any time without prior notice, as it deems appropriate.

Pre-Course Administration In-Course Administration Post-Course Administration Technical Support

- Registration
- Payment
- Attendance requirements
- Rescheduling requests and administrative fee
- Assessments and post-training administration, e.g. retrieval of e-Certs

How to register on MyIAL – Self-sponsored learners



- 1) On IAL homepage, click on 'Register' to sign up for a MyIAL account. Do note that Password must contain minimum 8 characters with lowercase, uppercase and numeric characters
- 2) If you already have an account, click on 'Login' to log in to your MyIAL account

How to register on MyIAL – Self-sponsored learners



MyIAL Login

Refer [here](#) for the Learner User Guide.
Refer [here](#) for the Corporate User Guide.

IAL has launched a new MyIAL portal. Please register to create a new password. If an account with the given email already exists, please reset password by selecting the "Forgot Your Password?" link on the login page. Refer [here](#) (Learner), [here](#) (Corporate) or [here](#) (IAL Adjunct AE) for steps to reset password. Please be reminded to check Spam/Junk mailbox for the email on reset password.

We regret that SkillsFuture Credit is temporarily unavailable.

Email*

Type your email here

Password*

Type your password here

[Forgot Your Password?](#)

Login

No account? [Register here](#)



Refer to the Learner User Guide for step-by-step instructions on

- Creating MyIAL account
- Setting up profile
- Navigating MyIAL dashboard
- Enrolling in courses



If you are a corporate user, do refer to the Corporate User Guide for step-by-step instructions on

- Corporate account registration
- Login and profile setup
- Billing and payment
- Enrolling employees in IAL courses

MylIAL features – For Learner

- **Register and make payment for IAL's courses**
- **View schedule details**
- **Submit requests for rescheduling**
- **View your attendance and assessment results, where applicable.**



Learner User Guide

ACCOUNT SETUP

- Create a Learner Account
- Profile Setup
- Account Login
- Forgot Password

LEARNER DASHBOARD

- Overview
- My Courses
- Payments
- Course Administration Information
- Course Evaluation
- Edit Profile

LEARNER ENROLMENT

- Enrolling for Full Qualifications
- Enrolling for Short Courses

Create a Learner Account

This page documents how you can sign up for a new Learner MylIAL account.

On the IAL homepage, click on the Register button to sign up for a MylIAL account

Proceed to enter the required information

- Valid email address
- Password

Click on the Create an Account button.

Create an Account

Your account will be used to access our learning portal.

Email*

Type your email here

Password*

Type your password here

Confirm Password*

MylIAL features – For Corporate Representative

- **Register employees** for new courses
- **Make payment**
- **Submit requests** for rescheduling
- **View your employees' attendance and assessment results.**



The screenshot displays the 'Corporate User Guide' interface. On the left is a sidebar menu with categories: ACCOUNT SETUP (including Corporate Account Registration, Account Login & Profile Setup, and Forgot Password), CORPORATE DASHBOARD (including Overview, Corporate Profile, Full Qualification, CPD, Course Administration Information, and Payments), and CORPORATE ENROLMENT (including Enrolling for Full Qualifications and Enrolling for Short Courses). The main content area is titled 'Corporate Account Registration' and includes a search bar, a progress indicator, and instructions on how to register. It lists required information (Valid email address, Password) and provides a 'Create an Account' section with an email input field.

Pay-as-you-register

Payment Advisory

Please proceed to make payment via eNets/credit card (VISA or MasterCard) and/or SkillsFuture Credit (SFC) at the end of the registration process. Please note that the system will automatically cancel the registration if full payment (including SFC, where applicable) has not been successfully processed by 11.59pm (Singapore Time) **on the same day of the registration**. You will have to reapply for the course, subject to availability of vacancy at the point of your re-registration.

For dedicated corporate runs with a contract signed with IAL, billing and payment will follow the terms of the signed contract. Otherwise, payment would be expected upon registration.

Using SkillsFuture Credit to offset ACLP 2.0 course fees

Only **self-sponsored applicants** can use SFC to offset ACLP 2.0 course fees.



As SFC claim can only be submitted within 60 days before the course start date (date inclusive), please check that your submission is within this timeline stipulated by SkillsFuture Singapore (SSG).

If you are registering for a cohort > 60 days before the course start date, the SSG-SFC portal would reject your application and you would need to pay the course fees upfront using other mode of payments i.e., eNets, Credit Card at the point of registration.

Thank you for your time!

Give us your feedback!



bit.ly/aclp_preview

Join us on Telegram!



https://t.me/learn_IAL