

# Singapore Workforce Skills Qualifications (WSQ) DIPLOMA IN DESIGN AND DEVELOPMENT OF LEARNING FOR PERFORMANCE (DDDLP)

Course reference number: TGS-2021002822



## Driving Performance through Blended Learning Design

# ADVANCE YOUR CURRICULUM DEVELOPMENT AND DESIGN WITH WSQ DIPLOMA IN DESIGN AND DEVELOPMENT OF LEARNING FOR PERFORMANCE

## Learning to design and develop effective blended courseware for the future

The new Singapore Workforce Skills Qualifications (WSQ) Diploma in Design and Development of Learning for Performance (DDDLP) programme is designed to equip aspiring curriculum developers and instructional designers with the fundamental competencies recognised by SkillsFuture Singapore (SSG) to design and develop SSG-funded certifiable courses.

With an added emphasis on blended learning in the new curriculum, DDDLp provides an updated take on courseware design through exploring a wide range of instructional strategies for classroom learning, tech-enabled and workplace learning. Learners will develop fundamental skills for creating effective blended learning and user-centric learning and assessment solutions, to enhance performance outcomes in today's workplace.

Drive your performance by gaining new competencies for design and development in blended learning today.

## Learning Outcomes

Graduates will acquire essential skills to:

- Conduct learning and performance needs analysis with intended learners and/or other key stakeholders
- Design user-centred blended curriculum to meet authentic learning and performance needs and promote learning-to-learn capabilities
- Design and develop user-centric learning resources to promote learning within and across learning modes
- Adopt a reflexive disposition for pursuit of professional mastery

## Who Should Attend?



### Trainers and Assessors

Trainers and assessors with a keen interest in curriculum and courseware design and development.



### New and Practising Curriculum Developers

New or practising curriculum developers who need to design curriculum and develop courseware within the Singapore Workforce Skills Qualifications (WSQ) framework.



### Professionals

Professionals with subject matter expertise in a specific domain (e.g. from retail to healthcare to manufacturing) who also take on curriculum and courseware design and development functions in their workplace.



## Already have DACE?

WSQ DDDLp is a revamped version of WSQ Diploma in Adult and Continuing Education (DACE). If you have already attained the WSQ DACE, you will continue to be recognised by SSG as meeting the SSG's AE qualification requirements for development of SSG-funded WSQ and non-WSQ courses.

## DDDLP Modules and Training Commitment

Module Code	Module Title	Learning Hours
LP1	<b>Apply Reflective Practice for Professional Mastery</b>	14 hrs
	Apply reflective practice as a means of enhancing their lifelong professional development by charting own mission plans and setting professional learning goals. Practise and reinforce reflective practice through subsequent modules.	
LP2	<b>Perform Learning and Performance Needs Analysis</b>	41 hrs
	Learn the steps required when undertaking a learning and performance needs analysis, with the purpose of proposing a blended learning solution where relevant.	
LP3	<b>Design Blended Curriculum and Instruction</b>	67 hrs
	Learn to apply relevant curriculum models and instructional design principles to develop effective blended curriculum aligned to organisation's learning needs.	
LP4	<b>Develop Learning Resources for Classroom Facilitation</b>	28 hrs
	Apply instructional strategies to develop user-centred activities and learning resources that are aligned to a sound curriculum design. This module focuses on classroom facilitation, including online facilitation.	
LP5	<b>Develop Learning Resources for e-Learning</b>	34 hrs
	Apply e-learning methodology to develop user-centred activities and learning resources that are aligned to a sound curriculum design, specifically e-learning. They are required to do storyboarding and design a short e-learning segment for asynchronous self-paced learning.	
LP6	<b>Develop Learning Resources for Workplace Learning</b>	N.A.
	ACL P M4 - Facilitate Workplace Learning is a pre-requisite module for exemption of LP6. Apply knowledge and skills learnt in ACL P M4 to design workplace learning plan and tasks and develop resources for workplace learning and coaching as part of the Applied Practice Project.	
LP7	<b>Design Assessment to Promote and Evaluate Learning</b>	36 hrs
	Apply concepts like principles of assessment and rules of evidence to design relevant and effective assessment methods and tools to evaluate and promote learning.	
<b>Total 7 Modules</b>		<b>220 hrs</b>

There is a one-week break between each module.

## Mode of Delivery



### Blended Learning Pedagogy

To cater to the learning needs of today, the DDDL P programme will explore instructional strategies for different learning modes.

Classroom Learning

Tech-enabled Learning

Workplace Learning



### Flipped Classroom Approach

Learners will be exposed to new lesson materials before class, and may be required to complete given tasks in preparation of the actual lesson. This will enable more active learning through discussion and activities during class time.

## Comparison of DDDL vs DACE: What's New?

- New modules to equip you with blended learning design skills
- Shift in learning and assessment design to build learning-to-learn capabilities
- Stackable modules from the WSQ Workplace Learning Facilitator (WLF) programme and WSQ Advanced Certificate in Learning and Performance (ACLP) programme
- Apply knowledge and skills learnt across LP2 through LP7 in the context of the Project Host Organisation (PHO) to design a blended curriculum and develop learning resources for classroom learning, tech-enabled and workplace learning
- Reflexive practice competencies are infused and reinforced through self and peer assessment across all modules

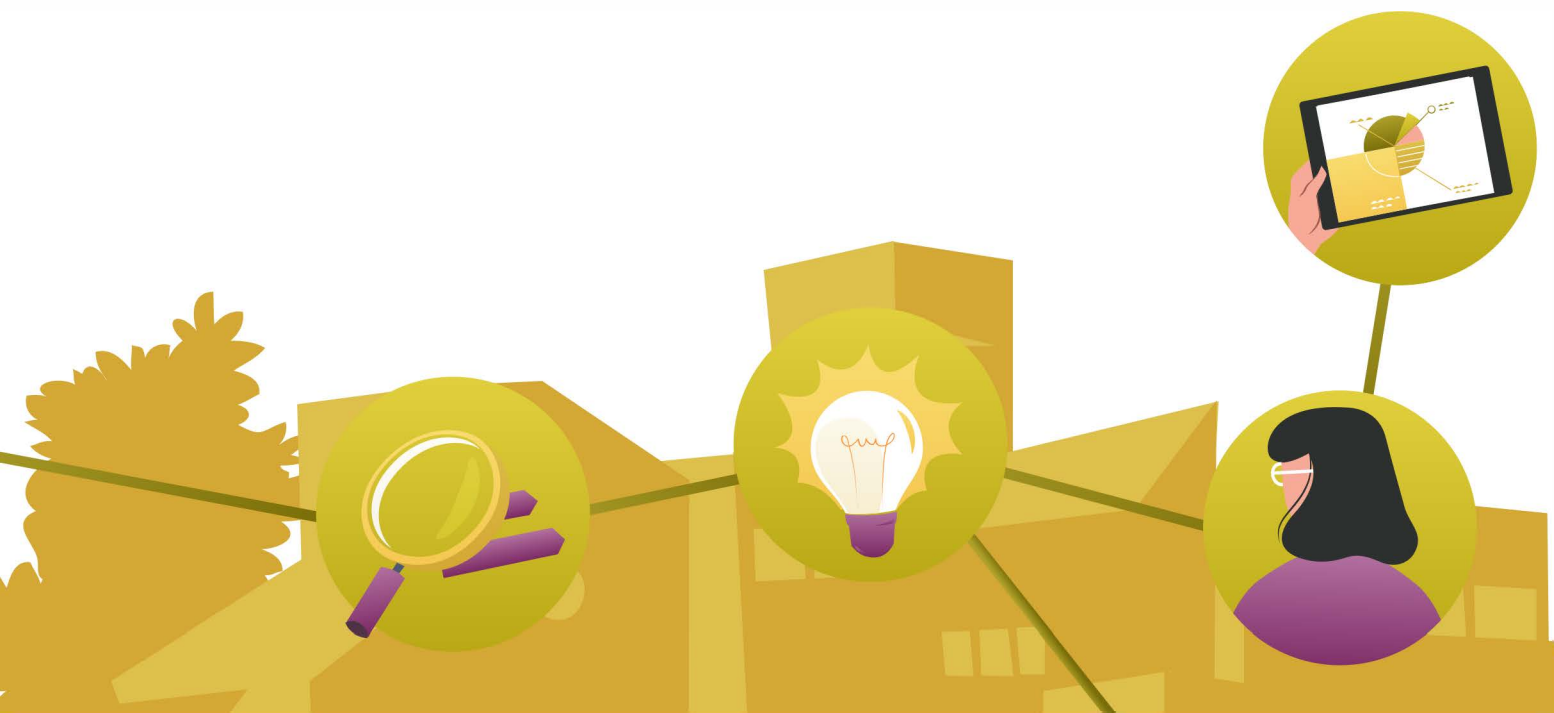
## DDDL Programme Fees and Funding

Full Programme Fee	Singapore Citizens and PRs after SkillsFuture 70% funding	Singapore Citizens after Mid-Career Enhanced Subsidy (MCES) 90% funding
<b>\$9,300.00</b> <b>(\$9,951.00 w/GST)</b>	<b>\$2,790.00</b> <b>(\$2,985.30 w/GST)</b>	<b>\$930.00</b> <b>(\$1,125.30 w/GST)</b>

## Entry Requirement - Pre-Requisites

Applicants must fulfil the following pre-requisites:

- ATTAINED EITHER:  
WSQ Advanced Certificate in Learning and Performance (ACLP) or equivalent  
OR  
WSQ Advanced Certificate in Training and Assessment (ACTA) + ACLP Module 4 Facilitate Workplace Learning / Workplace Learning Delivery or equivalent
- Secured a Project Host Organisation (PHO) for completion of Applied Practice Project (APP)





## About Institute for Adult Learning (IAL)

The Institute for Adult Learning (IAL) is an autonomous institute of the Singapore University of Social Sciences (UEN :200504979Z), at the forefront of building capabilities and continuing professional development for an effective, innovative and responsive Continuing Education and Training (CET) sector. As the national institute for adult educators, IAL plays a strategic role in meeting the changing market needs of enterprises and the workforce, and supports Adult Education professionals, businesses, and human resource developers and policy makers through its comprehensive suite of programmes and services. IAL also champions research in key areas of sustaining workplace performance and productivity through skills, shaping employment and CET decisions, as well as developing innovation through learning technology and pedagogy that holistically advances adult education.

For more information, please visit and connect with us via:



[www.ial.edu.sg](http://www.ial.edu.sg)



[AskIAL@ial.edu.sg](mailto:AskIAL@ial.edu.sg)



+65 6579 0300



[Facebook.com/IALSG](https://www.facebook.com/IALSG)



[Institute for Adult Learning Singapore](https://www.linkedin.com/company/institute-for-adult-learning-singapore)



[Institute for Adult Learning Singapore](https://www.youtube.com/channel/UC...)

11 Eunos Road 8

#07-04

Lifelong Learning Institute

Singapore 408601