



^ ADULT  
LEARNING  
SYMPOSIUM

# WORK AND LEARNING: CONQUER NEW FRONTIERS!

---

Loh Lik Peng / Founder, Unlisted Collection

UNLISTED  
COLLECTION:

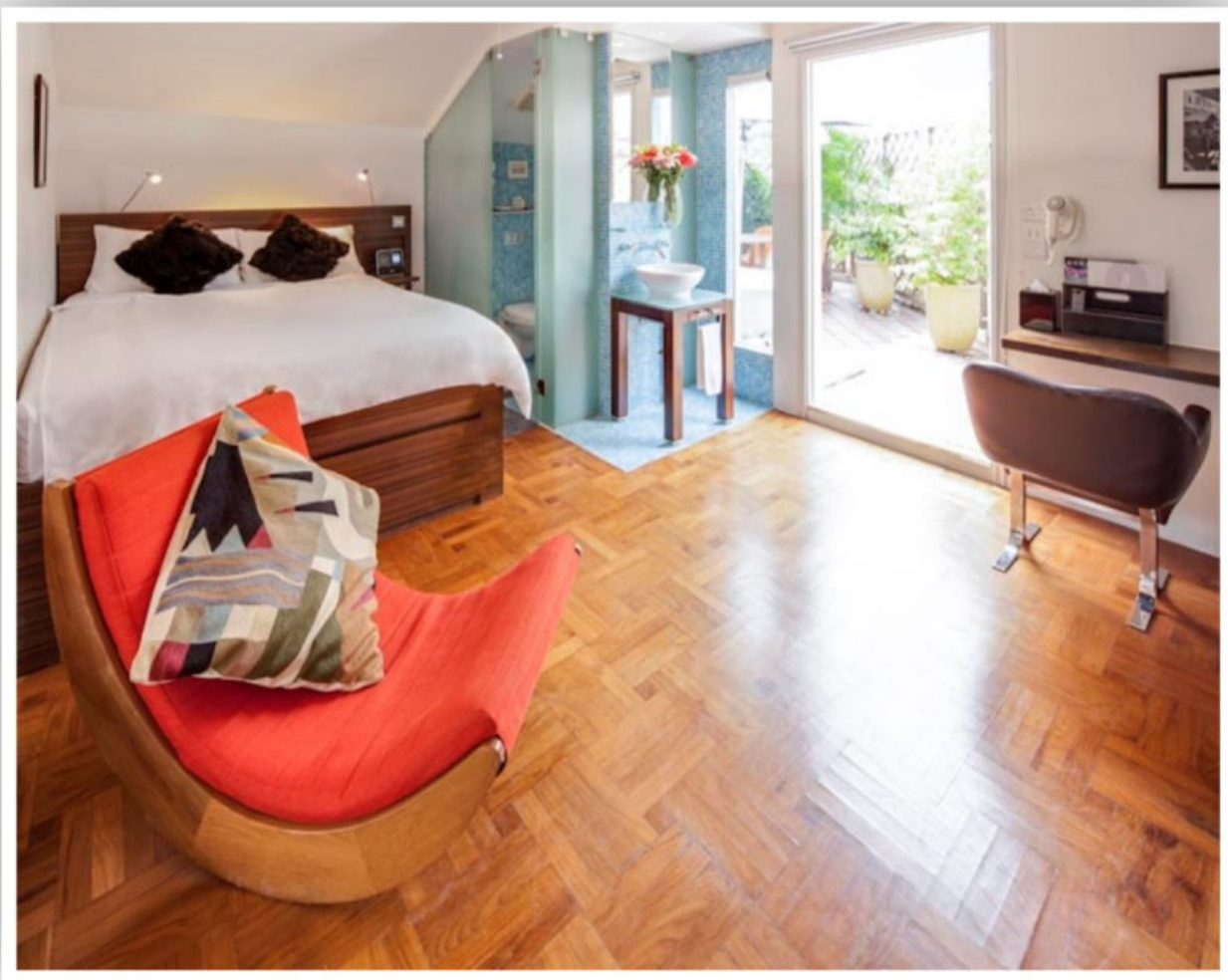


**HOTEL 1929**

UNLISTED  
COLLECTION:



UNLISTED  
COLLECTION:





UNLISTED  
COLLECTION:

# RESTAURANT EMBER, SINGAPORE

UNLISTED  
COLLECTION:

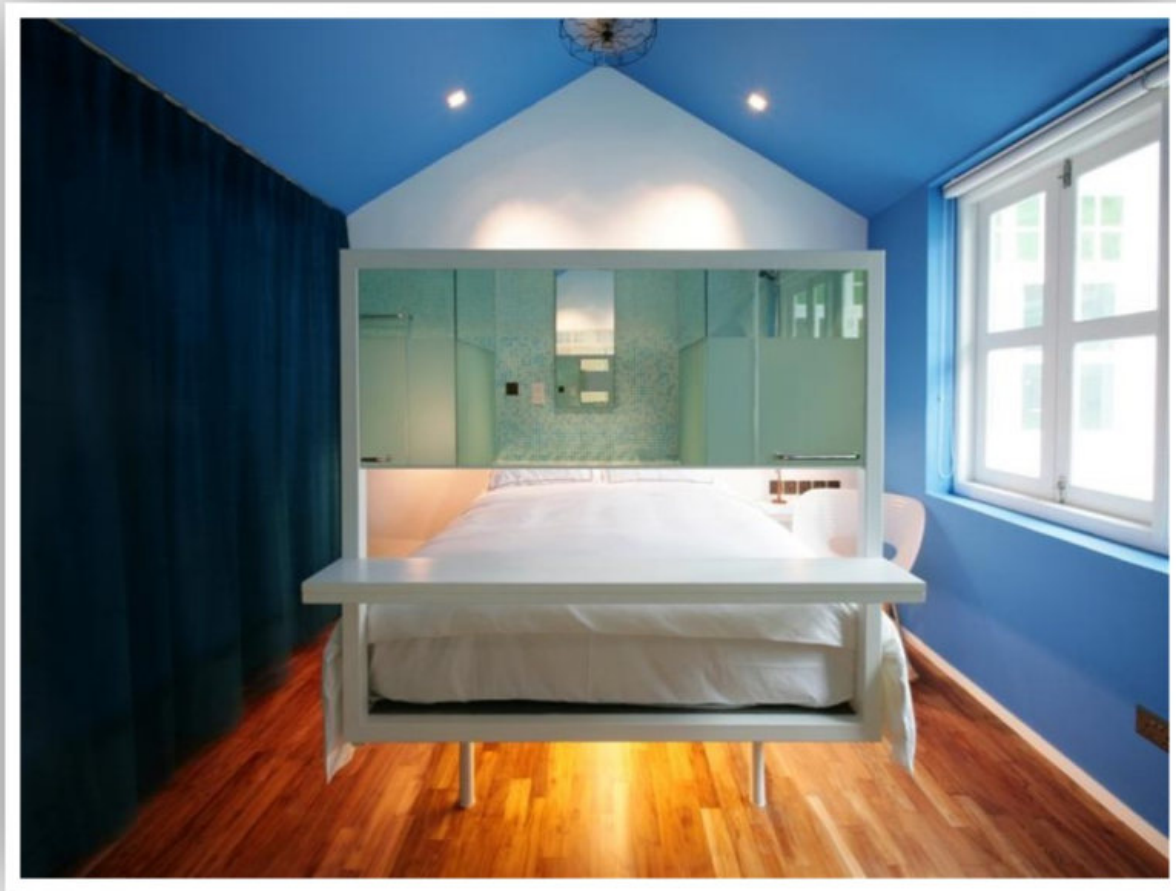


**MAJESTIC HOTEL**

UNLISTED  
COLLECTION:



UNLISTED  
COLLECTION:





UNLISTED  
COLLECTION:



# MAJESTIC RESTAURANT, SINGAPORE

UNLISTED  
COLLECTION:



# THE WATERHOUSE SOUTH BUND, SHANGHAI

UNLISTED  
COLLECTION:



UNLISTED  
COLLECTION:



# TOWNHALL HOTEL LONDON

UNLISTED  
COLLECTION:



UNLISTED  
COLLECTION:

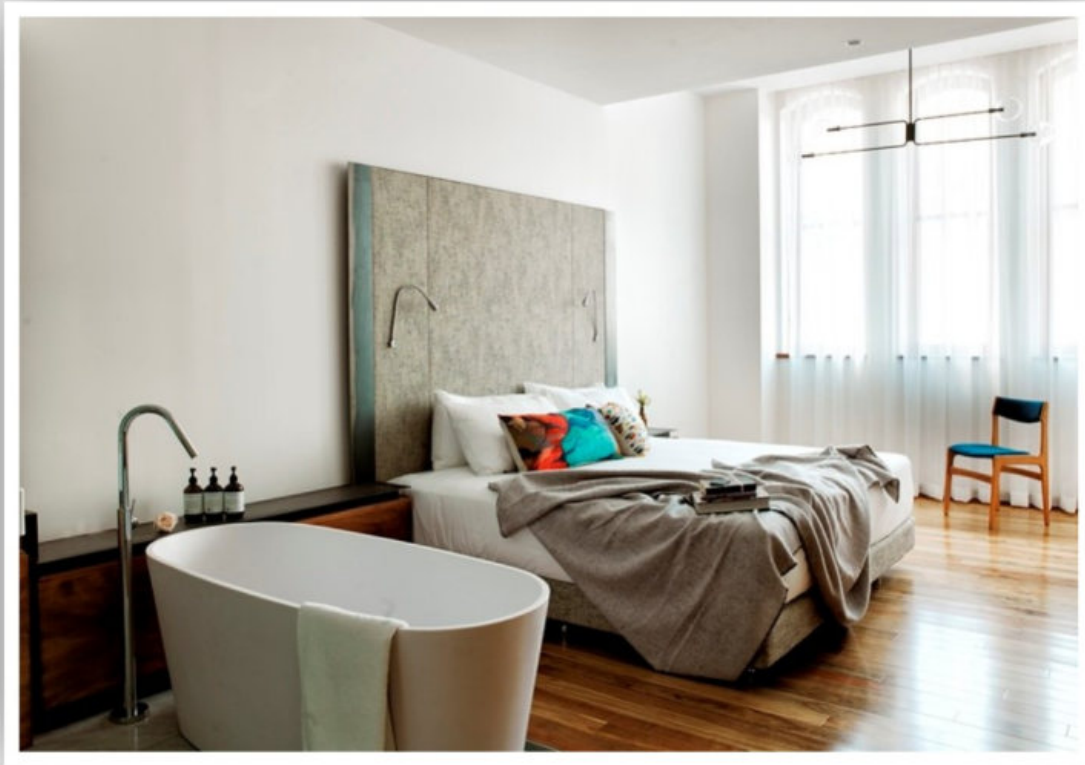


# CORNER ROOM LONDON

UNLISTED  
COLLECTION:



UNLISTED  
COLLECTION:





UNLISTED  
COLLECTION:



# KENSINGTON STREET SOCIAL SYDNEY

The background of the image is a close-up, high-resolution shot of a light brown, textured surface, possibly concrete or stone, that has cracked extensively. The cracks are dark and irregular, forming a network of jagged lines that divide the surface into various sized fragments. The lighting is somewhat uneven, with slightly darker areas in the crevices and highlights on the raised parts of the texture.

# **THIRD INDUSTRIAL REVOLUTION**

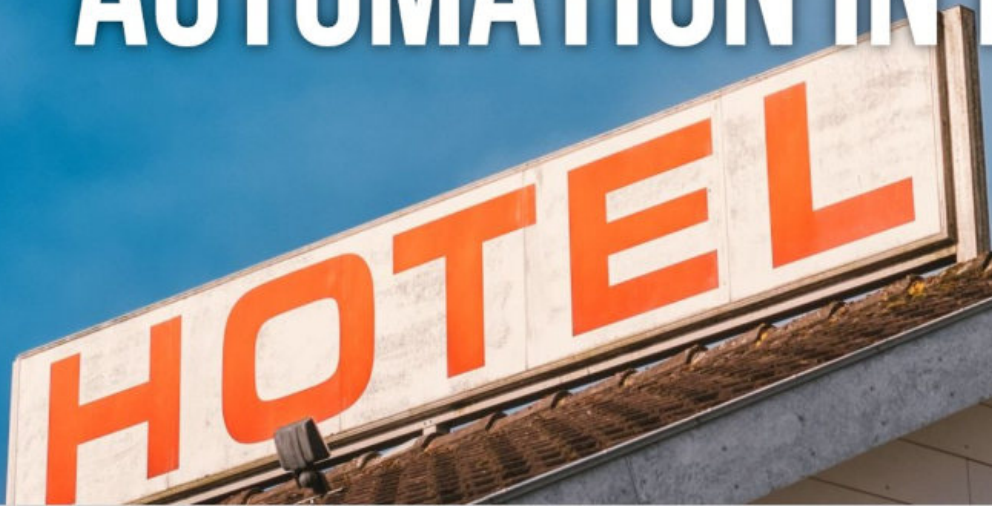
# DEMOGRAPHIC TIME BOMB



# AGE OF TECHNOLOGY

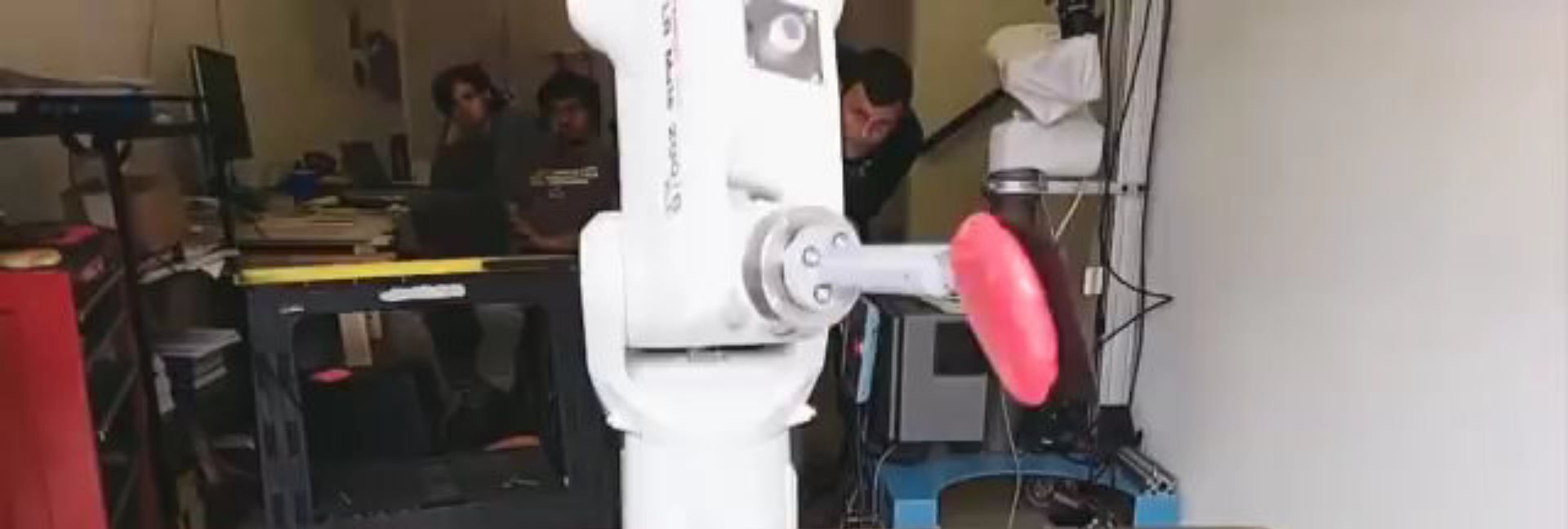


# AUTOMATION IN HOSPITALITY



**Business  
Traveller**





Machines can cook burgers over a hot griddle and slice tomatoes **more efficiently** than a human can do.





old spaghetti factory



# AUTOMATION IN CONSTRUCTION











# AUTOMATION IN SHIPPING



HERØYA

The aim is to reduce diesel-powered truck haulage by **40 000 journeys** a year, resulting in:

BREVIK



A woman with long blonde hair, wearing a dark blue uniform with a white shirt and tie, is seated in a black leather chair in a ship's bridge. She is looking towards the camera with a slight smile. In the background, there are large windows showing a bright, overcast sky. To her left, there is a control panel with several monitors displaying charts and data, and a pair of black binoculars on a desk in the foreground.

**Charlotte Låstad**

Chief Officer  
Norled AS

The main difference between Ampere  
and other conventional ferries is



**⚠ DANGER**  
⚠ CAUTION

D100  
U04A  
  
D100  
U04B

UNIT A  
UNIT B

**⚠ DANGER**

**⚠ CAUTION**

**CAVOTEC**

IMBEC  
Mobile Battery System

**⚠ DANGER**  
**⚠ CAUTION**

D100  
U05

# WHAT THIS MEANS

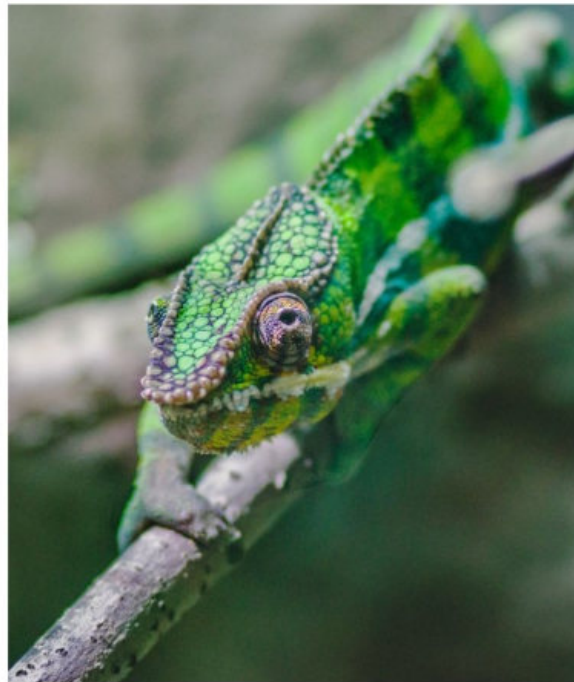
---



**CHANGE IS HERE**



**CHANGE IS GOOD**



**ADAPT!**

The **Fourth Industrial Revolution** is interacting with other socio-economic and demographic factors to create a perfect storm of **business model change** in all industries, resulting in major **disruptions** to labour markets. New categories of jobs will emerge, partly or wholly displacing others. The **skill sets** required in both old and new occupations will **change** in most industries and transform **how and where people work**. It may also affect female and male workers differently and **transform** the dynamics of the **industry gender gap**.

The Future of Jobs Report 2018, *World Economic Forum*

**WHAT IN YOUR WORKING  
WORLD IS THE MOST  
HUMAN AND PERSONAL  
THING THAT YOU DO?**

**REINFORCE THIS AND  
MAKE IT UNASSAILABLE.**

